

LEARN⁺™
more

Alabama Agriculture

Full of Food, Farmers & Fun!



5

Crops

Alabama Agriculture

LEARN more



Blackberries



Corn



Peaches



Soybeans



Wheat

Alabama

Blackberries

There are around **16,000 acres** of blackberries grown throughout the U.S.

375

species of blackberries.

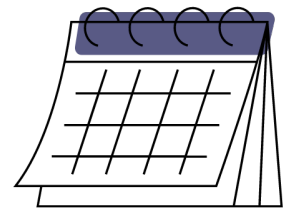
3 Main Types of Blackberries:

1. Thorny
2. Thornless
3. Trailing Thornless

All blackberry plants are **perennials**.

Navaho thornless blackberries are known to be the **sweetest**.

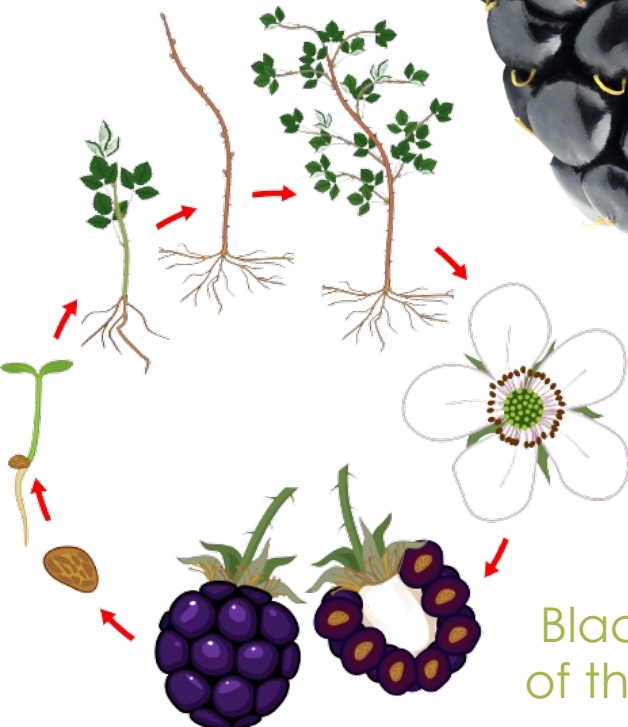
A blackberry plant can live for **15-20 years**.



Blackberries are **aggregate fruits**.

There are around **80** “drupelets” on each blackberry.

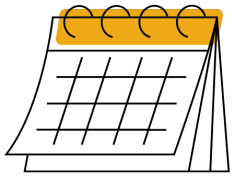
Blackberries are a member of the rose family, **Rosaceae**.



Alabama

Corn

The U.S. is the **LARGEST** producer, consumer & exporter of corn in the world.



90 MILLION acres of corn is harvested each year in the U.S.

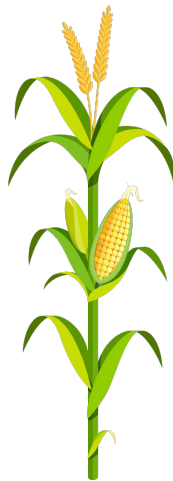
Corn is America's **number 1** field crop.

An ear of corn **ALWAYS** has an even number of rows.



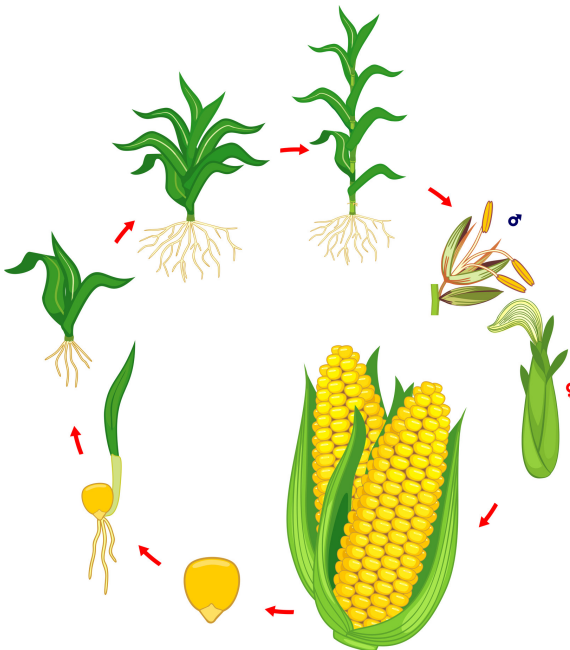
Corn is considered a **vegetable, fruit** AND a **grain!**

There are around **800** kernels on each ear of corn.



Most countries outside of the United States call corn "**maize**".

Most of the corn grown in the U.S. is grown in what is called the "**corn belt**" located in the Midwest.



Alabama

Peaches

The U.S. produces around **625,000 TONS** of peaches each year.

1 peach tree can produce up to **66 pounds** of fruit each year.

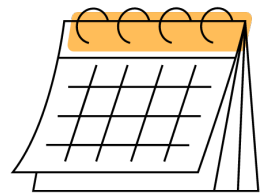
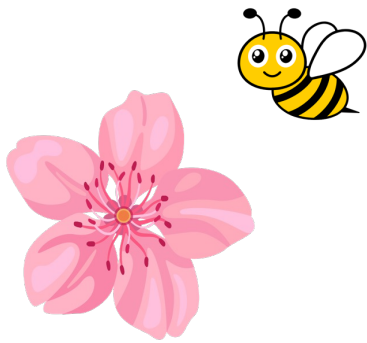
2 Main Varieties of Peaches:

1. Clingstone
2. Freestone

“**Persian plum**”

AUGUST

National Peach Month

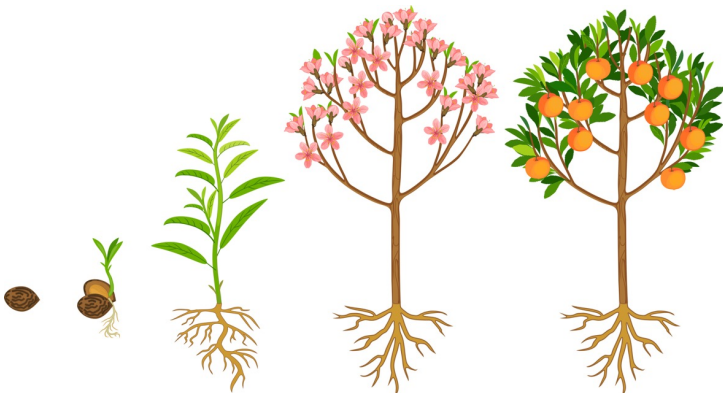


Peaches are in peak season from **June** - the end of **August**.

Once pollinated, peaches take **3-5 months** to reach harvesting point.



Peaches are harvested by **HAND**.



Peach trees can produce fruit for **12 years**.

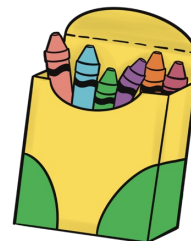
Peach trees usually grow to be around **25 feet tall**.



Alabama



The U.S. produces around **4 BILLION bushels** of soybeans each year.

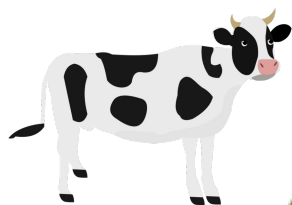


75 MILLION acres of farmland are used for growing soybeans in the U.S.

One acre of soybeans can produce **82,368** crayons!

Soybeans are a part of the **legume** family.

Soybeans were first grown in the U.S. for cattle feed.



The U.S. is the **leading** country in soybean production.

Soybean pods usually contains **3 seeds** each.

Each soybean plant produces around **100** pods.

Soybean plants average **3 - 5 feet** tall.



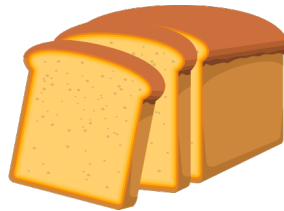
Wheat

The U.S. produces around **1.65 BILLION** bushels of wheat each year.

1 bushel of wheat contains around **100,000,000** individual kernels.

6 Classes of Wheat Grown in the U.S.

1. Hard Red Winter
2. Hard Red Spring
3. Soft Red Winter
4. Soft White
5. Durum



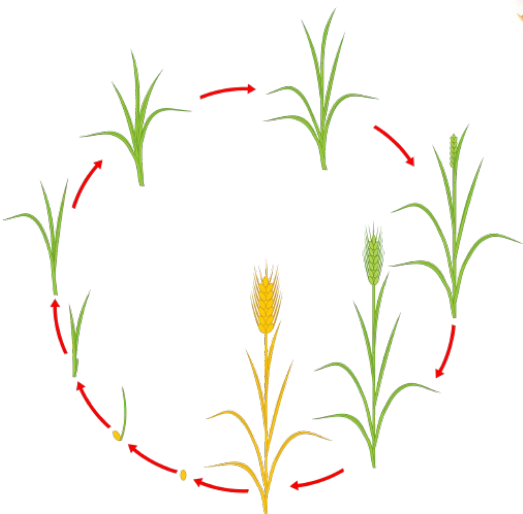
1 bushel of wheat can produce **90 loaves of bread.**

Hard Red Winter wheat is used mostly for making **breads.**

1 acre = **40** bushels of wheat.

The average wheat crop grows to be between **2 & 4** feet tall.

Wheat grows best in **warm** weather.



Wheat is the **MOST** harvested crop in the world.

Learn More Library

