

Fun Facts, Puzzles, Games & More!

CELEBRATION SERIES

LEARN<sup>+</sup>™  
more

# National States & Capitals Day

September 22<sup>nd</sup>



Arkansas

LITTLE ROCK

# NATIONAL DAY CALENDAR

National States & Capitals Day focuses on raising awareness and sharing education about all 50 states and their capitals on National States & Capitals Day.



Dick & Jane are the proud founders of **National States & Capitals Day**.

The *National Day Calendar* gets over 30,000 applications every year for new, national holidays, but they only choose 10 per year. In 2022, National States & Capitals Day was chosen and became an official, national holiday!

Let's celebrate!

★ #NationalStatesandCapitalsDay ★

4 state capitals are named after U.S. Presidents –

**Jackson, MS,**  
**Jefferson City, MO,**  
**Lincoln, NE &**  
**Madison, WI.**



Des Moines, IA was originally named “**Fort Racoon.**”



**Montpelier, VT** is the smallest U.S. capital by population.

**17 state's capital city** is also the **largest city** in that state.



Juneau, Alaska is the **LARGEST** U.S. capital by land area.



**Honolulu, HI** has the **highest average annual temperature** of all U.S. capital cities.

**Phoenix, AZ** is the **most populous** U.S. state capital with over **1.6 million people.**

Can you figure out the **ONLY letter** not used to spell any state name?



# Arkansas



25<sup>th</sup> State to join the Union  
on June 15, 1836.

## Fun Facts:

Arkansas's state flag has 25 stars to symbolize it becoming the 25<sup>th</sup> state.

Arkansas is home to the only active diamond mine in the U.S. - The Crater of Diamonds.

Arkansas is the leading producer of rice in the U.S. - producing over 40% of the country's supply.

## The Natural State

State Tree



Loblolly Pine

State Bird



Northern Mockingbird

State Capital



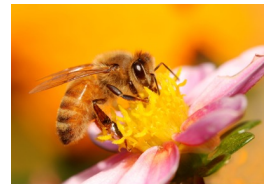
Little Rock

State Flower



Apple Blossom

State Insect



Honeybee

# Little Rock

# Little Rock



Little Rock became the capital of AR in 1821.

## Fun Facts:

The Arkansas State Capitol building was built between 1899 and 1915.

Little Rock is the most populous city in all of Arkansas.

Little Rock has a population of around 200,000.

The William J. Clinton Presidential Library is located in Little Rock, AR.

## Pulaski County

State Mammal



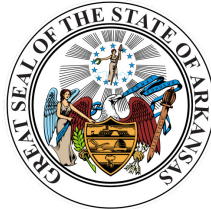
White-Tailed Deer

State Gem

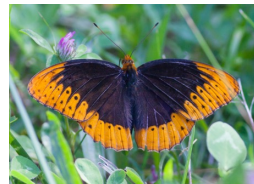


Diamond

State Seal



State Butterfly



Diana Fritillary

State Fish



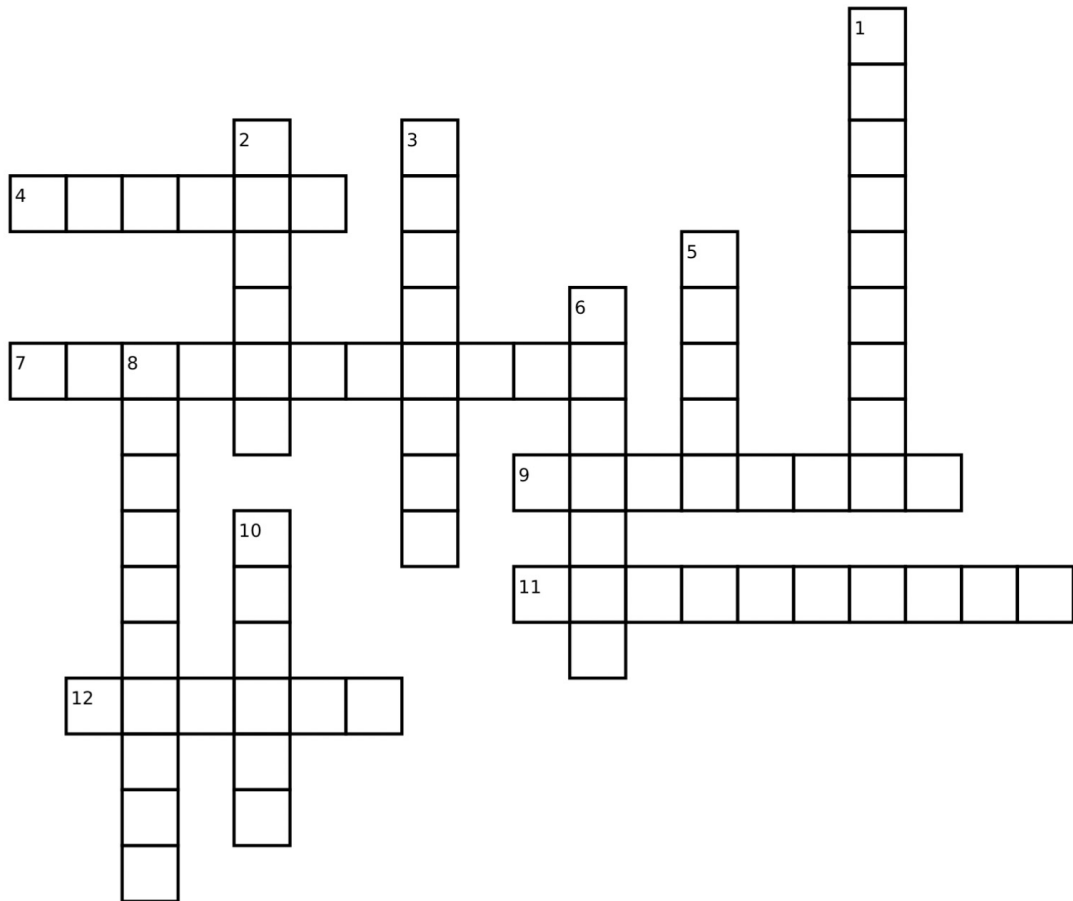
Alligator Gar

# Arkansas

# ★ Crossword Puzzle



Answers found in the States & Capitals Learn More magazine.



Down:

Across:

- |   |   |
|---|---|
| 1. The state flower of Kansas.                    | 4. The only U.S. capital inaccessible by car.   |
| 2. The 50 <sup>th</sup> state the join the Union. | 7. The Magnolia State.                          |
| 3. The Great Lakes State.                         | 9. The 1 <sup>st</sup> state to join the Union. |
| 5. The state flower of New Mexico.                | 11. The capital of Louisiana.                   |
| 6. The state tree of Georgia.                     | 12. The capital of Colorado.                    |
| 8. The capital of California.                     |   |
| 10. The state mammal of Oregon.                   |   |



# Matching Game



Match each state with their capital city.

## State

Arkansas

Delaware

Florida

Illinois

Kentucky

Massachusetts

Nebraska

Oklahoma

Rhode Island

Texas

Vermont

Washington

## Capital

Tallahassee

Oklahoma City

Providence

Little Rock

Montpelier

Springfield

Austin

Frankfort

Olympia

Dover

Lincoln

Boston

ALL 50 STATES

LEARN<sup>+</sup>™  
More

ENRICHMENT