

D I G I T A L M A G A Z I N E

CUSTOM EDITION

LEARN⁺™
more

Clarke County School District

Teaching Kids About **Georgia** Agriculture - Food, Farmers & Fun!



E N R I C H M E N T



FARM to SCHOOL

“The Clarke County School Nutrition Program is a partner in education, contributing to students' academic success by encouraging a lifetime of healthy eating through our breakfast and lunch meal programs.”

- Clarke County School Nutrition Program



A special thank you to **Holland Produce** who has been providing fresh produce to Clarke County School District since the **1980's**.



Clarke County
School District

Better Together

FARMERS MARKET FRIDAYS

Clarke County School District School Nutrition Services is proud to be participating in **Farmers Market Fridays** serving Georgia crops and celebrating local farmers.



Yellow Squash



Sweet Corn



Cabbage



Sweet Potatoes

Georgia

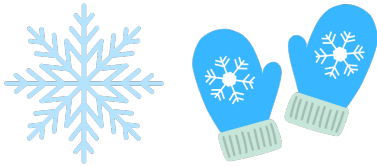
Squash

In Georgia, both summer and winter squash is **available nearly year-round.**

Georgia is the **3rd largest** squash producing state.

TWO Types of Squash: **WINTER** & **SUMMER**

Examples of winter squash are **pumpkins, acorn & butternut.**



Winter squash has much **harder** skin than summer squash.

Squash are a **fruit!**



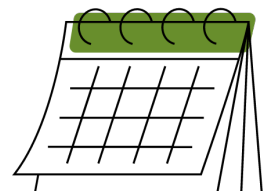
Examples of summer squash are **zucchini, yellow & scallop.**

Summer squash grows **faster** than winter squash.

Squash are related to **melons!**



1 acre of land could grow around **11,000** squash!



Winter squash takes **80 - 120 days** to mature after being planted.

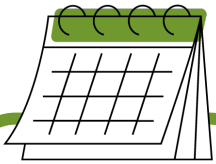
Osage Farms



Osage Farms is a **family owned** and **operated** fruit and vegetable farm.



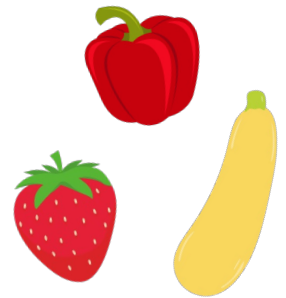
Osage Farms is currently run by **5th** and **6th** **generation** farmers **Ricky** and **Clint James**.



Osage Farms vegetable market is open **EVERDAY** May - Oct.



Osage Farms has been around for **over 40 years**.



Osage Farms grows a **wide variety** of fruits & vegetables.

Located in **Rabun County** - the **"Farm to Table"** capital of Georgia!

5030 US-441
Dillard, GA
30537

OSAGE FARMS
INC.
RABUN GAP, GEORGIA



Georgia

Sweet Corn

Sweet corn is grown in **EVERY county** throughout Georgia.



Georgia is home to over **27,000 acres** of sweet corn.

Georgia is the **3rd largest** sweet corn producing state in the U.S.

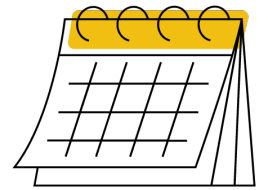
An ear of corn **ALWAYS** has an even number of rows.

In many other countries, corn is called "**maize.**"

Only **1%** of the corn grown in the U.S. is sweet corn.

Sweet corn is in *peak* season from **May - Sept.**

Corn is considered a **grain, fruit & vegetable.**

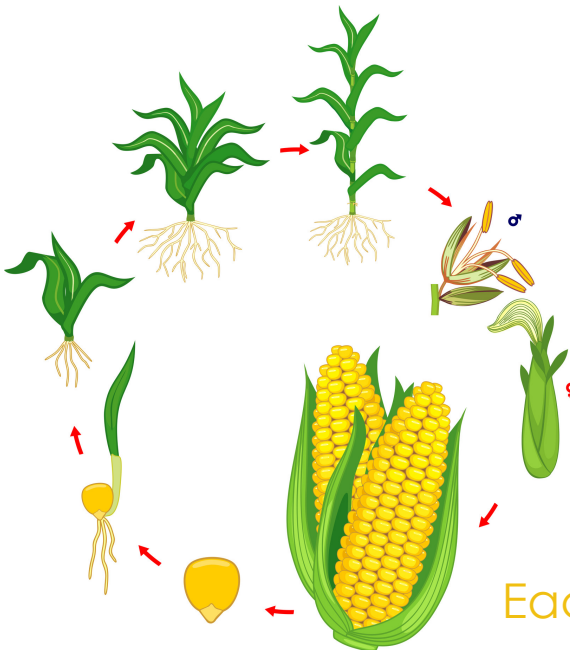


Around **800** kernels on each ear of corn.

Sweet corn is the **ONLY** corn grown for **human** consumption.

Sweet corn is pollinated by the **wind.**

Each stalk produces **1 - 3** ears of corn.



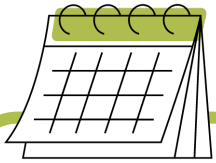
Osage Farms



Osage Farms is a **family owned** and **operated** fruit and vegetable farm.



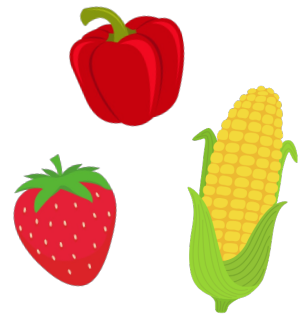
Osage Farms is currently run by **5th** and **6th** **generation** farmers **Ricky** and **Clint James**.



Osage Farms vegetable market is open **EVERDAY** May - Oct.



Osage Farms has been around for **over 40 years**.



Osage Farms grows a **wide variety** of fruits & vegetables.

Located in **Rabun County** - the **"Farm to Table"** capital of Georgia!

5030 US-441
Dillard, GA
30537

OSAGE FARMS
INC.
RABUN GAP, GEORGIA



Georgia

Cabbage

Georgia is home to around **30,000 acres** of cabbage.

Cabbage grows best in a lot of **sunlight**.



Cabbage is a **“cold-weather veggie.”**

Cabbage is one of the **OLDEST** vegetables in existence...has been harvested for over **6,000** years!

Peak season is from **November** to **April**.



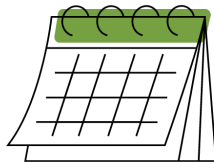
Average plant is **4 - 6 feet** tall.



Types of Cabbage:

1. Early
2. Late

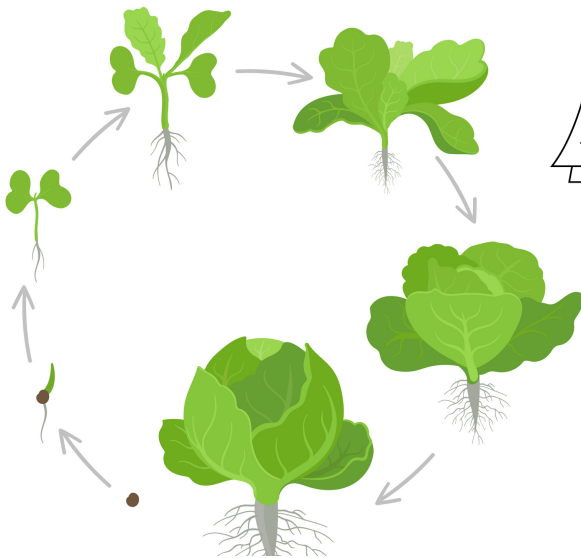
Early cabbage takes **45 days** to mature, and late cabbage takes **87 days**.



400+ varieties of cabbage.

The most **popular** varieties of cabbage:

1. **Green Cabbage**
2. **Red Cabbage**
3. **Savoy Cabbage**



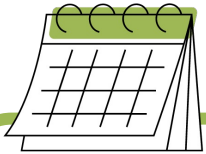
Osage Farms



Osage Farms is a **family owned** and **operated** fruit and vegetable farm.



Osage Farms is currently run by **5th** and **6th** **generation** farmers **Ricky** and **Clint James**.



Osage Farms vegetable market is open **EVERDAY** May - Oct.



Osage Farms has been around for **over 40 years**.



Osage Farms grows a **wide variety** of fruits & vegetables.

Located in **Rabun County** - the **"Farm to Table"** capital of Georgia!

5030 US-441
Dillard, GA
30537

OSAGE FARMS
INC.
RABUN GAP, GEORGIA



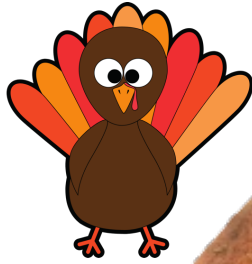
Georgia

Sweet Potatoes

Georgia's **warm climate** is perfect for growing sweet potatoes.

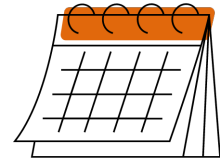
Georgia is home to around **5,000 acres** of commercially grown sweet potatoes.

Sweet potatoes are a popular **Thanksgiving** side dish.



Covington is the most popular variety of sweet potato grown in Georgia.

Sweet potato roots are harvested **90-120** days after planting.

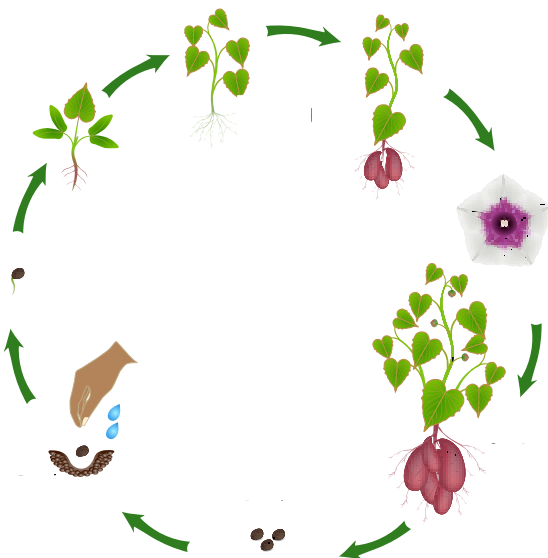


FEBRUARY
National Sweet Potato Month

A **root** vegetable.



Jewel is the most popular variety of sweet potato.



Sweet potatoes are in season **YEAR-ROUND!**

Sweet potatoes can be **orange, yellow, red, white** or **purple**.



Legacy Farm



Legacy Farm is a **family-owned farm** specializing in **sustainably grown produce**.

Sustainability is a top priority at Legacy Farm.



“A Legacy of Unparalleled Quality from Georgia's Finest Farm.”



Legacy Farm is where farming & community **thrive** together.

Legacy Farm offers services that provide **advice** to other farmers on **best practices** for growing **crops** & managing their land.

Legacy Farm grows a **wide variety** of crops.



9 Copeland Road
Lake Park, GA 31636



Georgia

Milk

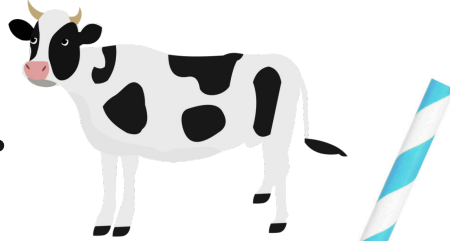
Georgia produces around **235 MILLION** gallons of milk per year.

Nearly **98%** of U.S. dairy farms are family owned & operated.

Georgia is home to **92,000** dairy cows & **89** dairy farms.

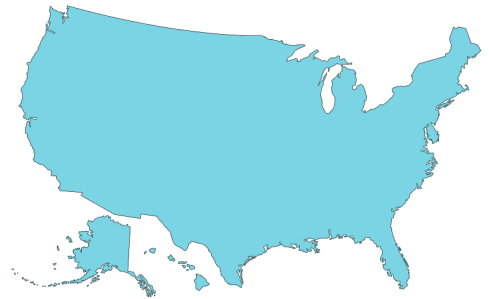
6

Breeds of Dairy Cows:



1. Ayrshire
2. Brown Swiss
3. Guernsey
4. Holstein
5. Jersey
6. Milking Shorthorn

ALL 50 states have dairy farms!



Holstein cows all have a **unique pattern of spots!**

1 cow produces around **6 gallons** of milk per day.

The reason milk is white is because it contains **“casein”** - a type of protein.

Farmers measure milk in **pounds**.

Milk is the source of **ALL** dairy products!

The U.S. produces **~21 BILLION** gallons of milk each year.



Dairy Farmers of America



Diary Farmers of America is a group of nearly **11,000 dairy farmers** across the U.S.



ALL DFA dairy farms are **family owned & operated.**



"We work to preserve the ability to pass down the farm to the next generation."

Clarke County School District serves **PET** milk.

DFA is a group of **6,000 dairy farms.**



PET

PET milk is provided by DFA dairy farms.



Two family farms supply milk for PET – **Eberly Family Farm & Windcrest Holsteins**

Eberly Family Farm is located in **Waynesboro, Georgia.**



Georgia Agriculture

LEARN ⁺ More



Beans



Bell Peppers



Blueberries



Cabbage



Cantaloupe



Corn



Cucumbers



Milk



Okra



Peaches



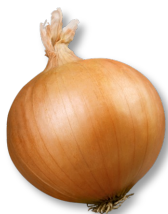
Soybeans



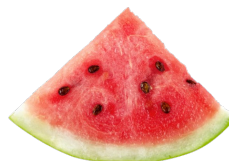
Squash



Sweet Corn



Vidalia Onion



Watermelon



Wheat