

D I G I T A L M A G A Z I N E

CUSTOM EDITION

LEARN⁺™
more

Duarte Unified School District

Teaching Kids About **California** Agriculture - Food, Farmers & Fun!



E N R I C H M E N T



FARM to SCHOOL

“Balancing Nutrition, Physical Activity and Knowledge for all to lead healthy productive lives.”

- Duarte Unified School District Food & Nutrition Services



DUSD Garden

DUARTE
UNIFIED SCHOOL DISTRICT

FARMERS MARKET FRIDAYS

Duarte Unified School District Food & Nutrition Services is proud to be participating in **Farmers Market Fridays** serving California crops and celebrating local farmers.



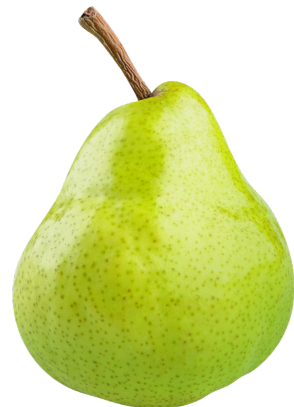
Lettuce



Carrots



Apples



Pears

California

Lettuce

California produces **70%** of all lettuce grown in the U.S.



California produces the most lettuce in **Monterey County**.

Darker green lettuce leaves are **MORE** nutritious than lighter green leaves.

4 Main Types of Lettuce:

MOST

LEAST

Lettuce prefers to grow in **colder climates**.



1. Butterhead
2. Crisphead
3. Looseleaf
4. Romaine



Lettuce is **95%** water.



Iceberg lettuce (also known as crisphead) is the most popular type of lettuce in the U.S.

Lettuce is a part of the **sunflower** family.



Lettuce is the **2nd** most popular vegetable in the U.S.

Because of lettuce's water %, it must always be eaten **FRESH**.



Taylor Farms



Taylor Farms was founded by **Bruce Taylor** in 1995.



Taylor Farms started in Salinas Valley, California – known as ***America's Salad Bowl***.

Taylor Farms is the **LARGEST** grower of organic leafy greens in the U.S.



Bruce Taylor was a **third-generation farmer**.



Each year, **3 BILLION seeds** are planted at Taylor Farms.

Dedicated to a **sustainable future**.

64% of Taylor Farms land is **organic**.

Salinas Valley, CA.



24,000 team members.



California

Carrots

85% of all carrots grown in the U.S. come from California.

Around **61,000 acres** of carrots are harvested in California each year.

Carrots are **88%** water.

Carrots are the **second most popular** vegetable in the world, after potatoes.

Carrots take **4 months** to complete growing.

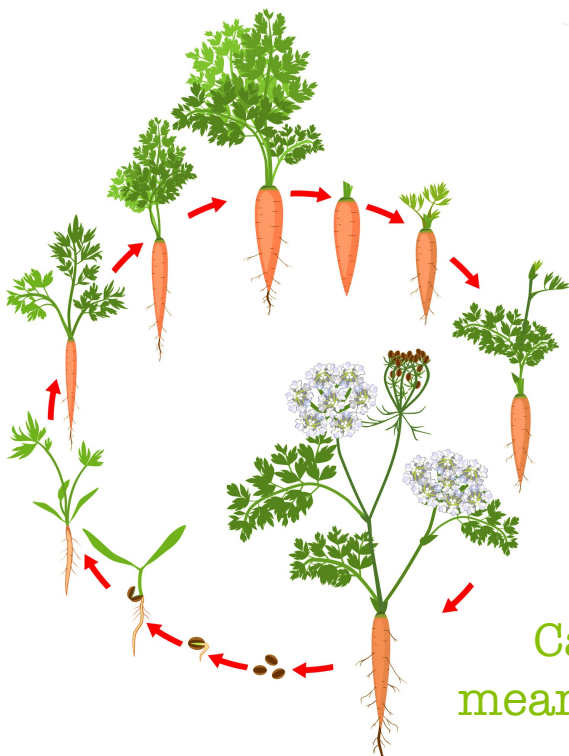
2,000 carrot seeds fit in **1 teaspoon**.

Carrots thrive in overall **cooler** temperatures.

Carrots can survive entire **WINTERS** underground!

The world record for the longest carrot is over **19 feet!**

Carrots are **biennials**, which means they have a 2-year life cycle.



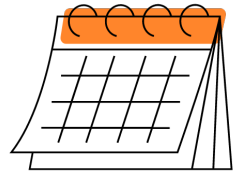


Kern Ridge Growers



Kern Ridge Growers has been **family owned & operated** since 1973.

“We pride ourselves in providing our customers **premium quality** and **excellent service.**”



Kern Ridge Growers ownership consists of **4 families**, each with **50+ years of carrot industry experience.**



Kern Ridge Growers carrots are available **year-round.**



Produce both conventional & **organic** carrots.

Kern Ridge Growers **grow, pack & ship** their carrots.



Started off by packaging **cello carrots.**



California

Apples

Apples are grown on **25,000+** acres throughout California.

California is **the 5th largest** apple producing state in the U.S.

4 Types of Apples CA Specializes In:

1. Gala
2. Fuji
3. Granny Smith
4. Pink Ladies

21% of apples are juiced.

2,500

varieties of apples are grown in the United States.

All of the U.S. produces **250** million bushels of apples each year.

36

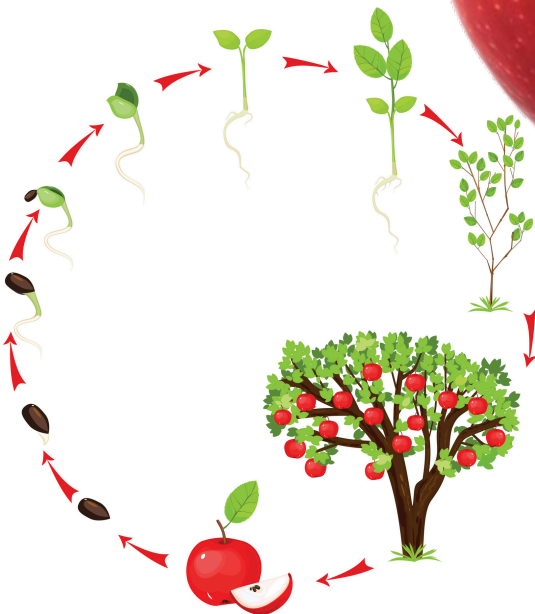
apples make **1** gallon of cider.



An **apple blossom** is the flower that comes from an apple tree.

An apple tree takes at least **4 years** to start producing fruit.

Most apples are **HAND-PICKED.**



Brisa Ranch



Brisa Ranch is a **small, organic** farm founded by **3 friends** in **2018**.

Brisa Ranch was started by **Cristóbal Cruz Hernández, Verónica Mazariegos-Anastassiou & Cole Mazariegos-Anastassiou**.

“Farming is a labor of **love** for us.”



Brisa Ranch sells **directly** to their customers.



Brisa Ranch is located Alongside **Año Nuevo State Park**.

15 acres of land.



Brisa Ranch grows a wide variety of **organic fruits, vegetables & flowers**.

Their location is home to **ecologically diverse** farmland.

BRISA RANCH
PESCADERO, CA

Pescadero, CA.



California

Pears

California is home to around **60 pear farms**.

The average size for a pear farm in California is **130 acres**.

Pears used to be called "**butter fruit**" because of their soft texture.

Over **3,000** varieties of pears.



The majority of pear farms in California are **family owned**.

BUTTER

Pear tree **wood** is often used to make musical instruments.



Pears ripen best **after** they are picked.

Pears are a part of the rose family.



Pears prefer to grow in **cooler** climates.



The most **fragile** fruit.

30-40 ft. tall trees.



ALL pears are picked by **HAND**.

Common types of pears: **Anjou, Bartlett, Bosc, Comice & Forelle**.

Scully Packing



Scully Packing was founded on **quality** & built on **long-term relationships**.

Scully Packing is a family partnership between **Phil and Toni Scully** and their **two sons**.

Scully Packing was started in **1984**.

35% of all California pears are packed at Scully Packing.



Scully Packing packs pears from **EVERY** growing region in California.

50% of the pears packed by Scully Packing are **homegrown** on their farm - **Scully Farms**.



Finley, CA.

Scully Packing provides both **organic** & conventional pears.

“Your single source for California’s **best** pears.”



Milk

California is the **number 1** milk producing state in the U.S.

46% of California milk goes into making California cheese.

6 Breeds of Dairy Cows:

1. Ayrshire
2. Brown Swiss
3. Guernsey
4. Holstein
5. Jersey
6. Milking Shorthorn

Holstein cows all have a **unique pattern of spots!**

1 cow produces around **6 gallons** of milk per day.

The reason milk is white is because it contains **“casein”** - a type of protein.



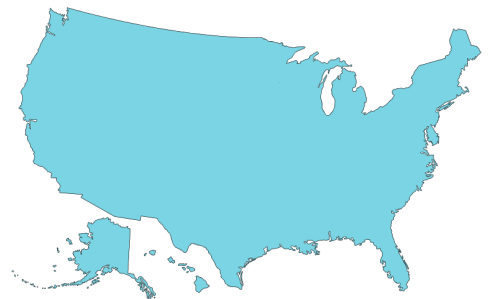
Farmers measure milk in **pounds**.

Milk is the source of **ALL** dairy products!

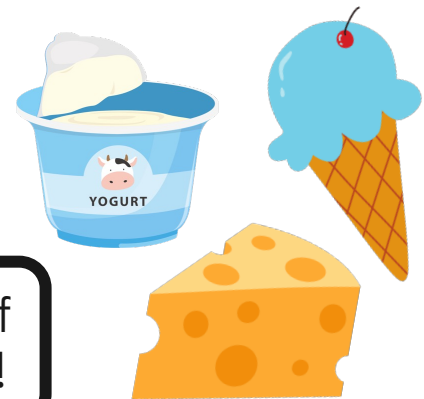
California is home to **1,100+** dairy farms.

Nearly **98%** of U.S. dairy farms are family owned & operated.

ALL 50 states have dairy farms!



The U.S. produces **~21 BILLION** gallons of milk each year.



Driftwood Dairy



Driftwood Dairy all started with **Pat J. Dolan** starting a dairy business in **1918**.

Driftwood Dairy is the **LARGEST** milk provider to **schools** in Southern California.

Delivers milk to **2,500 schools** each day.

“Drifty the Cow”



Driftwood Dairy is a member of CDI – **California Dairy, Inc.**

300+ CDI dairy farm members.

17 BILLION pounds of milk produced/year by CDI dairy farms.



El Monte, CA.

Driftwood Dairy's 5 Core Values:

1. Local Economies
2. Sustainability
3. Valued Workforce
4. Animal Welfare
5. Nutrition



California Agriculture

LEARN⁺ More



Apples

Celery

Limes

Raspberries

Apricots

Cherries

Milk

Rice

Artichokes

Cucumbers

Nectarines

Spinach

Arugula

Dates

Okra

Squash

Asparagus

Dragon Fruit

Olives

Strawberries

Avocados

Garlic

Oranges

Sunflowers

Bell Peppers

Green Beans

Passion Fruit

Sweet Corn

Blueberries

Grapefruit

Peaches

Sweet Potatoes

Broccoli

Grapes

Pears

Tangerines

Brussels Spouts

Honeydew

Persimmons

Tomatillos

Cabbage

Kiwifruit

Plums

Tomatoes

Cantaloupe

Kumquats

Pluots

Watermelon

Carrots

Lemons

Potatoes

Wheat

Cauliflower

Lettuce

Pumpkins