

Fun Facts, Puzzles, Games & More!

CELEBRATION SERIES

LEARN<sup>+</sup>™  
more

National States & Capitals Day

September 22<sup>nd</sup>



Florida

TALLAHASSEE

# NATIONAL DAY CALENDAR

National States & Capitals Day focuses on raising awareness and sharing education about all 50 states and their capitals on National States & Capitals Day.



Dick & Jane are the proud founders of **National States & Capitals Day**.

The *National Day Calendar* gets over 30,000 applications every year for new, national holidays, but they only choose 10 per year. In 2022, National States & Capitals Day was chosen and became an official, national holiday!

Let's celebrate!

★ #NationalStatesandCapitalsDay ★

4 state capitals are named after U.S. Presidents –

**Jackson, MS,**  
**Jefferson City, MO,**  
**Lincoln, NE &**  
**Madison, WI.**



Des Moines, IA was originally named “**Fort Racoon.**”



**Montpelier, VT** is the smallest U.S. capital by population.

**17 state's capital city** is also the **largest city** in that state.



Juneau, Alaska is the **LARGEST** U.S. capital by land area.



**Honolulu, HI** has the **highest average annual temperature** of all U.S. capital cities.

**Phoenix, AZ** is the **most populous** U.S. state capital with over **1.6 million people.**

Can you figure out the **ONLY letter** not used to spell any state name?





# Florida



27<sup>th</sup> State to join the Union  
on March 3, 1845.

## Fun Facts:

Florida's coastline, coming in at 1,350 miles, is the longest in the continental U.S.

Florida has the 3<sup>rd</sup> most lakes in the U.S., with more than 7,500.

Florida is a peninsula – meaning it is almost entirely surrounded by water.

## The Sunshine State

State Tree



Palmetto

State Bird



Mockingbird

State Capital



Tallahassee

State Flower



Orange Blossom

State Shell



Horse Conch

# Tallahassee



# Tallahassee



Tallahassee became the capital of FL in 1824.

## Fun Facts:

Florida's capitol building is the 3rd tallest capitol building in the U.S.

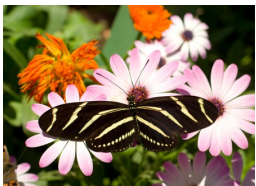
The name Tallahassee comes from a Muskogean word meaning "Old Fields" or "Old Towns."

Tallahassee has a population of around 197,000.

Tallahassee's nickname is "Tally."

## Leon County

State Butterfly



Zebra Longwing

State Animal



Florida Panther

State Seal

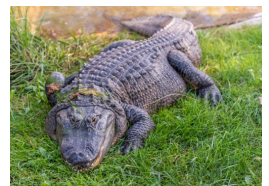


State Fruit



Orange

State Reptile



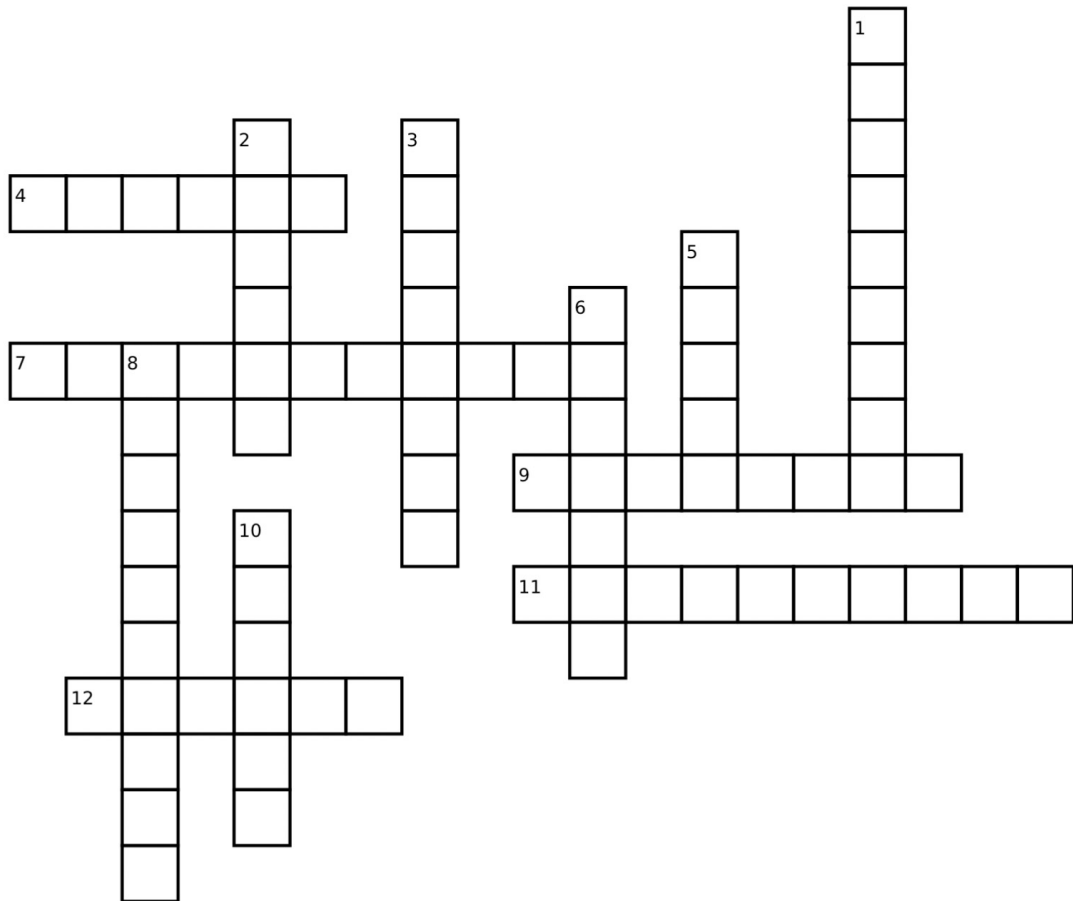
American Alligator

# Florida

# ★ Crossword Puzzle



Answers found in the States & Capitals Learn More magazine.



Down:

Across:

- |                                                   |                                                 |
|---------------------------------------------------|-------------------------------------------------|
| 1. The state flower of Kansas.                    | 4. The only U.S. capital inaccessible by car.   |
| 2. The 50 <sup>th</sup> state the join the Union. | 7. The Magnolia State.                          |
| 3. The Great Lakes State.                         | 9. The 1 <sup>st</sup> state to join the Union. |
| 5. The state flower of New Mexico.                | 11. The capital of Louisiana.                   |
| 6. The state tree of Georgia.                     | 12. The capital of Colorado.                    |
| 8. The capital of California.                     |                                                 |
| 10. The state mammal of Oregon.                   |                                                 |



# Matching Game



Match each state with their capital city.

## State

Arkansas

Delaware

Florida

Illinois

Kentucky

Massachusetts

Nebraska

Oklahoma

Rhode Island

Texas

Vermont

Washington

## Capital

Tallahassee

Oklahoma City

Providence

Little Rock

Montpelier

Springfield

Austin

Frankfort

Olympia

Dover

Lincoln

Boston

ALL 50 STATES

LEARN<sup>+</sup>™  
More

ENRICHMENT