

Fun Facts, Puzzles, Games & More!

CELEBRATION SERIES

LEARN⁺™
more

National States & Capitals Day

September 22nd



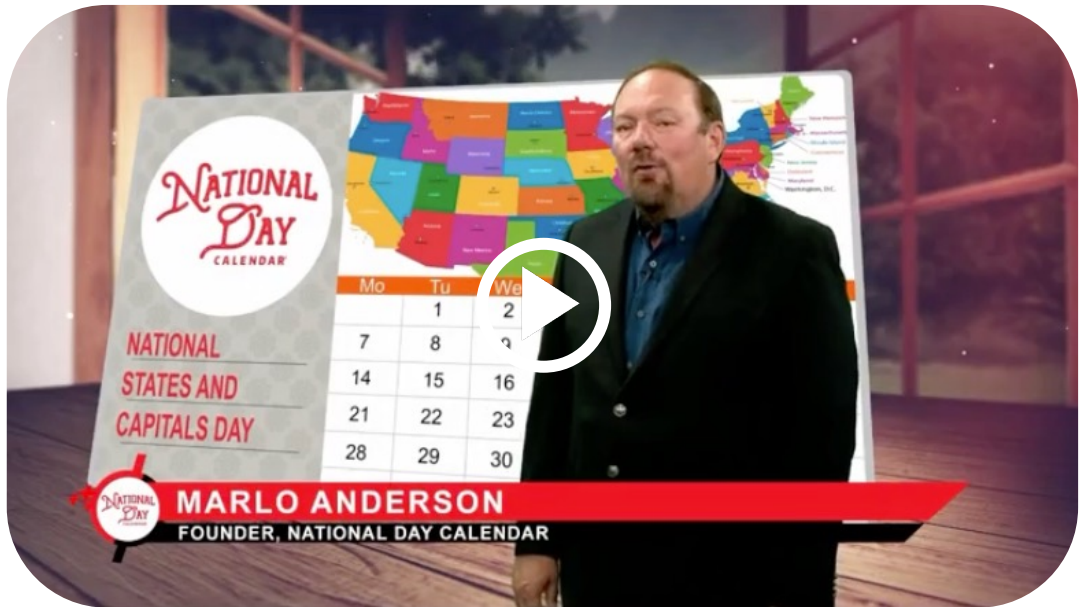
NATIONAL
STATES & CAPITALS
DAY

Georgia

ATLANTA

NATIONAL DAY CALENDAR

National States & Capitals Day focuses on raising awareness and sharing education about all 50 states and their capitals on National States & Capitals Day.



Dick & Jane are the proud founders of **National States & Capitals Day**.

The *National Day Calendar* gets over 30,000 applications every year for new, national holidays, but they only choose 10 per year. In 2022, National States & Capitals Day was chosen and became an official, national holiday!

Let's celebrate!

★ #NationalStatesandCapitalsDay ★

4 state capitals are named after U.S. Presidents –

Jackson, MS,
Jefferson City, MO,
Lincoln, NE &
Madison, WI.



Des Moines, IA was originally named “**Fort Racoon.**”



Montpelier, VT is the smallest U.S. capital by population.

17 state's capital city is also the **largest city** in that state.



Juneau, Alaska is the **LARGEST** U.S. capital by land area.



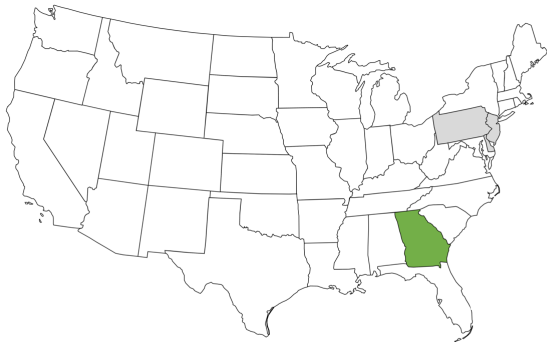
Honolulu, HI has the **highest average annual temperature** of all U.S. capital cities.

Phoenix, AZ is the **most populous** U.S. state capital with over **1.6 million people.**

Can you figure out the **ONLY letter** not used to spell any state name?



Georgia



Fun Facts:

Georgia is home to one of the oldest state parks in the country – Indian Springs State Park.

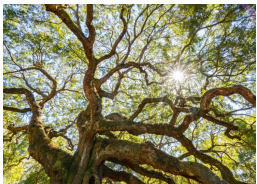
In 1945, Georgia became the first state to change the legal age to vote from 21 to 18.

Only one U.S. President is from Georgia – Jimmy Carter.

4th State to join the Union
on January 2, 1788.

The Peach State

State Tree



Live Oak

State Bird



Brown Thrasher

State Capital



Atlanta

State Flower



Cherokee Rose

State Fruit



Peach

Atlanta

Atlanta



Atlanta became the capital of GA in 1868.

Fun Facts:

Georgia's capitol building is gilded with 43 ounces of locally mined gold.

Atlanta is Georgia's largest city with a population of around 500,000.

There are over 55 streets named "Peachtree" in Atlanta.

Fulton County

State Amphibian



Green Tree Frog

State Mammal

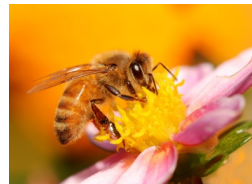


White-Tailed Deer

State Seal



State Insect



Honeybee

State Vegetable



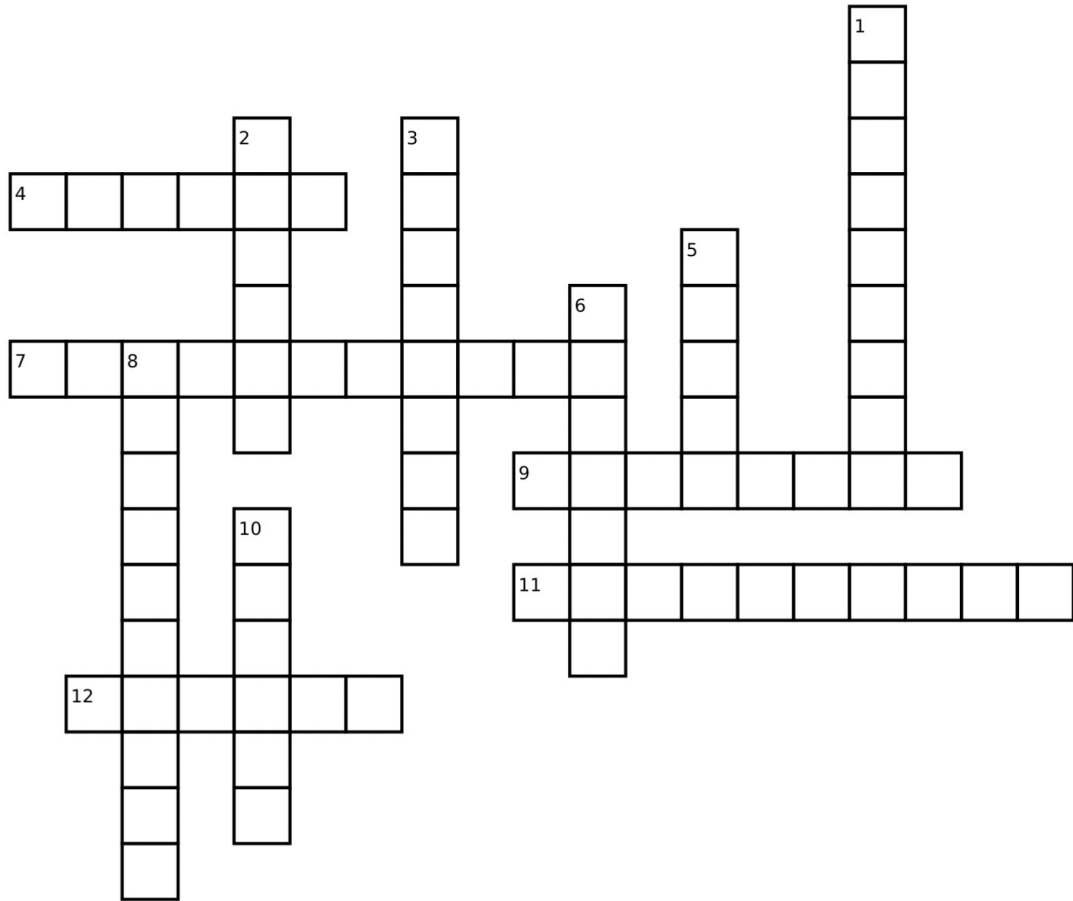
Vidalia Onion

Georgia

★ Crossword Puzzle



Answers found in the States & Capitals Learn More magazine.



Down:

Across:

- | | |
|---|---|
| 1. The state flower of Kansas. | 4. The only U.S. capital inaccessible by car. |
| 2. The 50 th state the join the Union. | 7. The Magnolia State. |
| 3. The Great Lakes State. | 9. The 1 st state to join the Union. |
| 5. The state flower of New Mexico. | 11. The capital of Louisiana. |
| 6. The state tree of Georgia. | 12. The capital of Colorado. |
| 8. The capital of California. | |
| 10. The state mammal of Oregon. | |



Matching Game



Match each state with their capital city.

State

Arkansas

Delaware

Florida

Illinois

Kentucky

Massachusetts

Nebraska

Oklahoma

Rhode Island

Texas

Vermont

Washington

Capital

Tallahassee

Oklahoma City

Providence

Little Rock

Montpelier

Springfield

Austin

Frankfort

Olympia

Dover

Lincoln

Boston

ALL 50 STATES

LEARN⁺™
More

ENRICHMENT

