

D I G I T A L M A G A Z I N E

LEARN⁺™ more

Hawai'i Agriculture

Full of Food, Farmers & Fun!



3

Crops

E N R I C H M E N T

Hawai'i Agriculture

LEARN More



Coffee



Dragon Fruit



Pineapple

Hawai'i

Coffee

Coming Soon!



Hawai'i

Dragon Fruit

Hawai'i is home to around **170,000 acres** of dragon fruit trees.

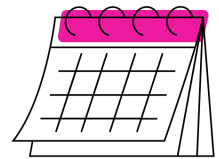
Hawai'i harvests **25,000 pounds** of dragon fruit/year.

The darker the dragon fruit, the **sweeter** it is.

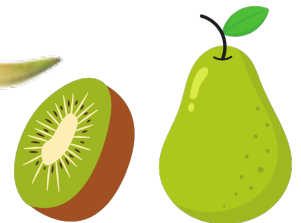
Dragon fruit is a **night-blooming** plant.

4 Types of Dragon Fruit:

1. Red skin/white flesh
2. Red skin/red flesh
3. Red skin/purple flesh
4. Yellow skin/white flesh



Peak season is **Aug - Sept.**



Dragon fruit tastes like a mix between a **kiwi** and a **pear**.

Dragon fruit plants grow to be up to **20 feet** tall.



Dragon fruit grows on a **“climbing cactus plant”**.



Hawai'i

Pineapples

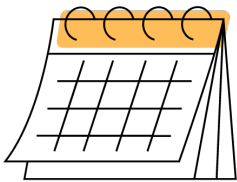
Hawai'i produces **1/3** of the world's pineapples.

The Dole plantation Pineapple Garden Maze in Hawai'i is the **largest maze in the world!**

"Hala Kahiki"

It can take up to **3 years** for a pineapple plant to fully mature before it begins bearing fruit.

Some pineapple plants can live for up to **50 years**.



Pineapples are in peak season from **March - July**.



Pineapples ripen **faster** when upside down.



Pineapples are made up of clusters of **"fruitlets."**

The "fruitlets" are basically small, individual berries.

ONE pineapple plant produces only **ONE** pineapple at a time.

Learn More Library

