

LEARN⁺™
more

Illinois Agriculture

Full of Food, Farmers & Fun!



7

Crops

Illinois Agriculture

LEARN *more*



Apples



Corn



Oats



Pumpkins



Soybeans



Sweet Corn



Wheat

Illinois

Apples

On average, **240 MILLION** bushels of apples are harvested across the U.S. each year.



5 of the Most Popular Varieties of Apples:

1. Red Delicious
2. Gala
3. Granny Smith
4. Fuji
5. Golden Delicious

The U.S. is home to approximately **322,000 acres** of apple orchards.

2,500



varieties of apples are grown in the United States.

36

apples make **1 gallon** of cider.



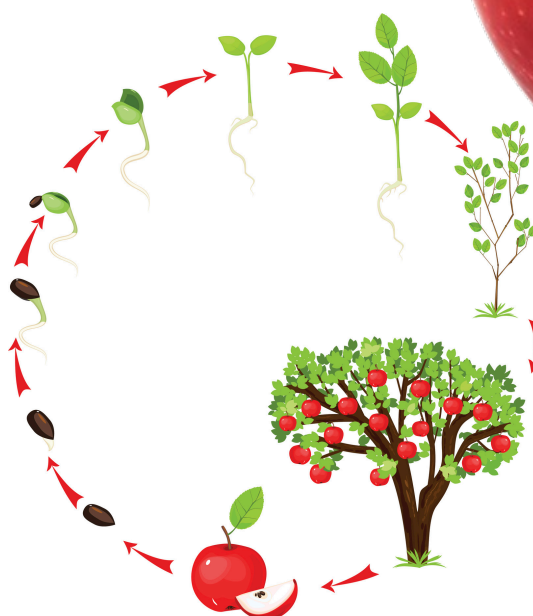
21% of apples are juiced.



An **apple blossom** is the flower that comes from an apple tree.

An apple tree takes at least **4 years** to start producing fruit.

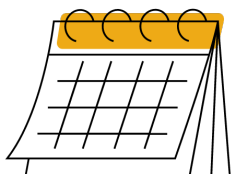
Most apples are **HAND-PICKED.**



Illinois

Corn

The U.S. is the **LARGEST** producer, consumer & exporter of corn in the world.



90 MILLION acres of corn is harvested each year in the U.S.

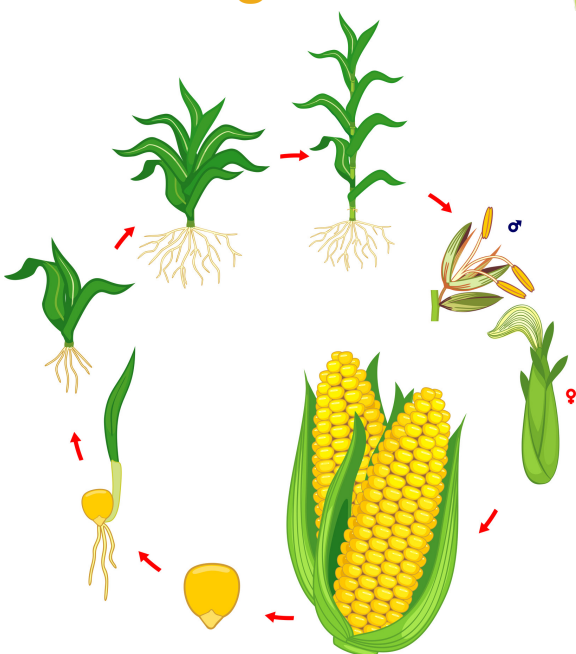
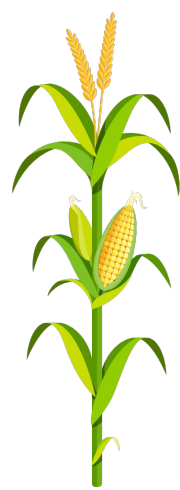
Corn is America's **number 1** field crop.

An ear of corn **ALWAYS** has an even number of rows.



Corn is considered a **vegetable, fruit** AND a **grain!**

There are around **800** kernels on each ear of corn.



Most countries outside of the United States call corn "**maize**".

Most of the corn grown in the U.S. is grown in what is called the "**corn belt**" located in the Midwest.

Illinois

Oats

The U.S. produces around **57 MILLION bushels** of oats each year.

Oats have been cultivated for **thousands** of years.

2 Kinds of Oats:

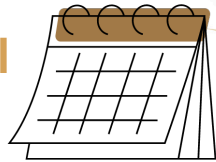
1. Husked
2. Naked

More than half of the world's oats are grown in the U.S. & Canada.

Oats are a **cool season** crop.

Oats are **planted** during the summer and early fall.

January is National Oatmeal Month!

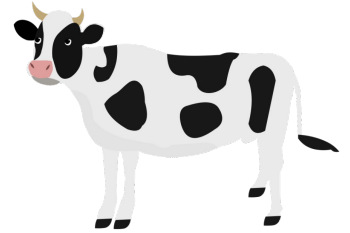


Farmers use a "**combine harvester**" to harvest the oats.



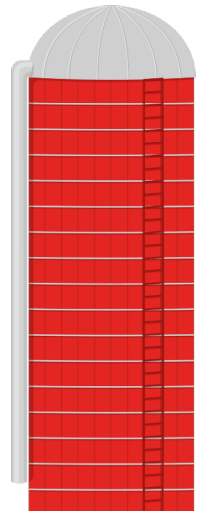
Oats are also used to make flour and alternative milk.

Farmers use oat straw as **bedding** for cattle & horses.



95% of oats grown in the U.S. are used for livestock feed.

Oats are stored in **silos**.



Illinois

Pumpkins

Illinois harvests around **650 MILLION pounds** of pumpkins per year.

In total, the U.S. produces around **1.6 BILLION pounds**.



Pumpkin pie is the **most popular** Thanksgiving dessert.



45+ varieties of pumpkins.

Illinois and **Indiana** grow around **50%** of all U.S. grown pumpkins.

Pumpkins range in color from **red, yellow, green & orange!**



Pumpkins are grown on **EVERY** continent except Antarctica.

500

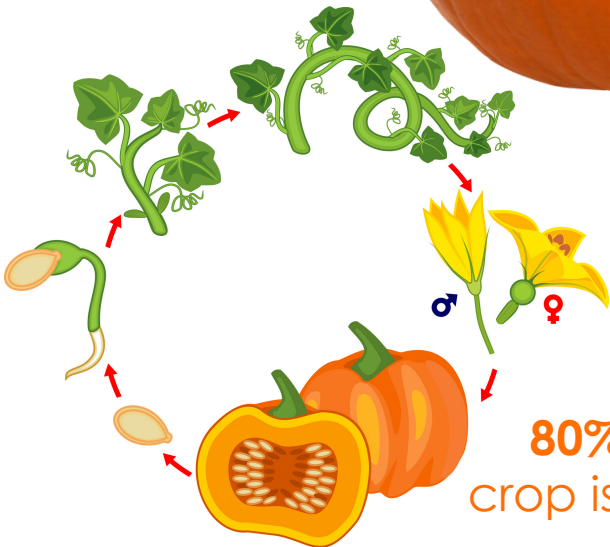
seeds/pumpkin.



Pumpkins are **90%** water.



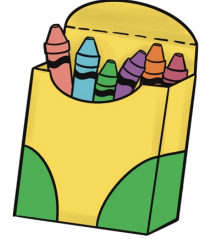
80% of the U.S. pumpkin crop is available in **OCTOBER**.



Illinois

Soybeans

The U.S. produces around **4 BILLION bushels** of soybeans each year.

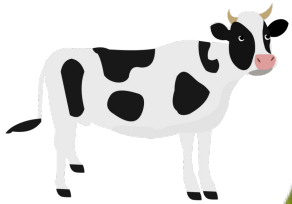


75 MILLION acres of farmland are used for growing soybeans in the U.S.

One acre of soybeans can produce **82,368** crayons!

Soybeans are a part of the **legume** family.

Soybeans were first grown in the U.S. for cattle feed.



The U.S. is the **leading** country in soybean production.



“Miracle Bean”

Soybean pods usually contains **3 seeds** each.

Each soybean plant produces around **100** pods.

Soybean plants average **3 - 5 feet** tall.



Illinois

Sweet Corn

Only 1% of all corn grown in the U.S. is sweet corn.

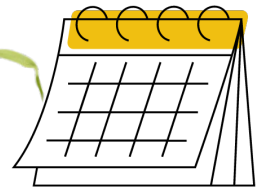
The U.S. is home to around **340,000 acres** of sweet corn.

All 50 states grow sweet corn – find some at your local farmer's market!

An ear of corn **ALWAYS** has an even number of rows.

In many other countries, corn is called "**maize.**"

Only 1% of the corn grown in the U.S. is sweet corn.



Sweet corn is in *peak* season from **May - Sept.**

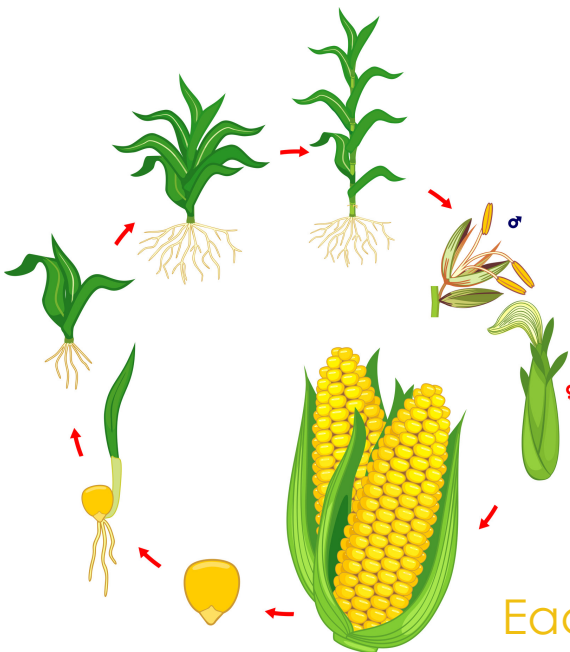


Around **800** kernels on each ear of corn.

Sweet corn is pollinated by the **wind.**

Sweet corn is the **ONLY** corn grown for **human** consumption.

Corn is considered a **grain, fruit & vegetable.**



Each stalk produces **1 - 3** ears of corn.

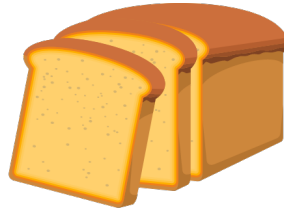
Wheat

The U.S. produces around **1.65 BILLION** bushels of wheat each year.

1 bushel of wheat contains around **100,000,000** individual kernels.

6 Classes of Wheat Grown in the U.S.

1. Hard Red Winter
2. Hard Red Spring
3. Soft Red Winter
4. Soft White
5. Durum



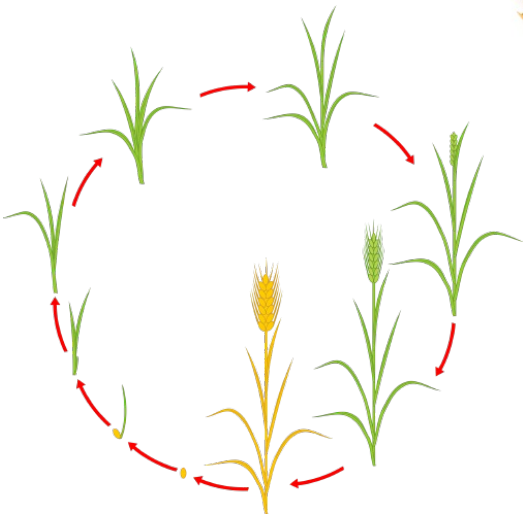
1 bushel of wheat can produce **90 loaves of bread.**

Hard Red Winter wheat is used mostly for making **breads.**

1 acre = **40** bushels of wheat.

The average wheat crop grows to be between **2 & 4** feet tall.

Wheat grows best in **warm** weather.



Wheat is the **MOST** harvested crop in the world.

Learn More Library

