

LEARN⁺™
more

New Mexico Agriculture

Full of Food, Farmers & Fun!



5

Crops

New Mexico Agriculture

LEARN⁺ more



Beans



Chiles



Corn



Prickly Pears



Wheat

New Mexico

Beans

New Mexico has 2 state vegetables – **pinto beans** & chiles.

Beans have been cultivated by humans for **6,000** years.

Dry beans are grown in **30+ states**.

The U.S. is home to **around 1.3 MILLION acres** of dry beans.

Popular Types of Beans:

1. Green Beans
2. Kidney Beans
3. Pinto Beans
4. Lima Beans

Dry beans include pinto, navy, kidney & black beans.



The World's Tallest Bean Plant was over **45 feet tall**.

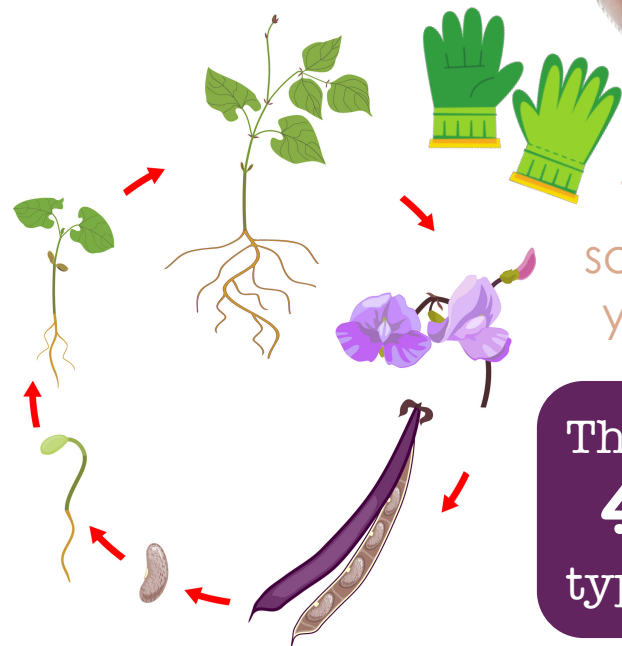


Equivalent to **3 fully-grown giraffes** stacked on top of one another.



Try growing some beans in your garden!

There are over **40,000** types of beans.



New Mexico

Chiles

New Mexico produces the **most** chiles in the United States.

New Mexico harvests around **53,000 TONS** of chiles each year.

Chile peppers are a **fruit**.

Chile peppers come in a variety of different colors.

Chile peppers have been growing in New Mexico for at least **400 years**.

Chile peppers thrive in **long, hot days and warm nights**.

Ideally **8 - 12** hours.

The heat of chile peppers are measured on a **Scoville scale**.

Chiles are a part of the **nightshade** family.

Chiles get **spicier** the longer they ripen on the vine.

The best way to cool down your mouth after eating a spicy pepper is with **milk**.

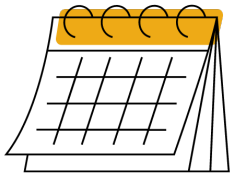
Capsaicin is the compound in peppers that make them spicy.



New Mexico

Corn

The U.S. is the **LARGEST** producer, consumer & exporter of corn in the world.



90 MILLION acres of corn is harvested each year in the U.S.

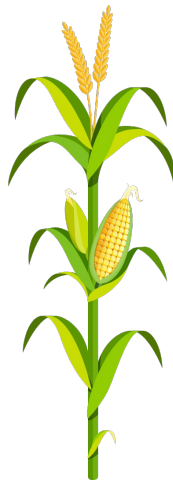
Corn is America's **number 1** field crop.

An ear of corn **ALWAYS** has an even number of rows.

Corn is considered a **vegetable, fruit** AND a **grain!**

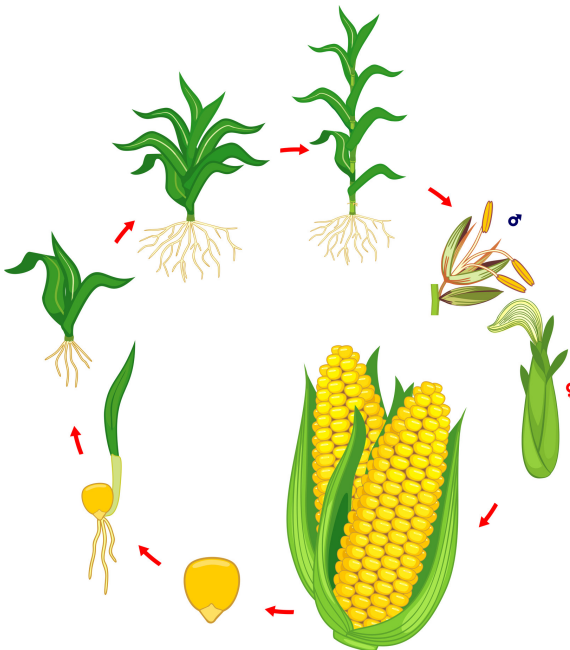


There are around **800** kernels on each ear of corn.



Most countries outside of the United States call corn "**maize**".

Most of the corn grown in the U.S. is grown in what is called the "**corn belt**" located in the Midwest.



New Mexico

Prickly Pears

Coming Soon!



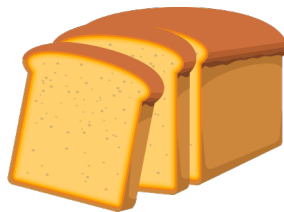
New Mexico

Wheat

New Mexico harvests over **160,000 acres** of wheat each year.

6 Classes of Wheat Grown in the U.S.

1. Hard Red Winter
2. Hard Red Spring
3. Soft Red Winter
4. Soft White
5. Durum



Hard Red Winter wheat is used mostly for making **breads**.

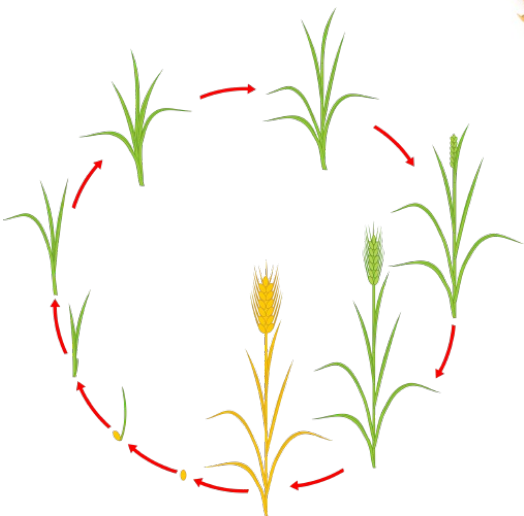
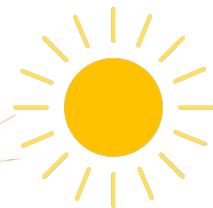
1 bushel of wheat contains around **100,000,000** individual kernels.

1 bushel of wheat can produce **90 loaves of bread**.

1 acre = **40** bushels of wheat.

The average wheat crop grows to be between **2 & 4 feet tall**.

Wheat grows best in **warm** weather.



Wheat is the **MOST** harvested crop in the world.

Learn More Library

