

Fun Facts, Puzzles, Games & More!

CELEBRATION SERIES

LEARN⁺™
more

National States & Capitals Day

September 22nd



Pennsylvania

PHILIDELPHIA

NATIONAL DAY CALENDAR

National States & Capitals Day focuses on raising awareness and sharing education about all 50 states and their capitals on National States & Capitals Day.



Dick & Jane are the proud founders of **National States & Capitals Day**.

The *National Day Calendar* gets over 30,000 applications every year for new, national holidays, but they only choose 10 per year. In 2022, National States & Capitals Day was chosen and became an official, national holiday!

Let's celebrate!

★ #NationalStatesandCapitalsDay ★

4 state capitals are named after U.S. Presidents –

Jackson, MS,
Jefferson City, MO,
Lincoln, NE &
Madison, WI.



Des Moines, IA was originally named “**Fort Racoon.**”



Montpelier, VT is the smallest U.S. capital by population.

17 state's capital city is also the **largest city** in that state.



Juneau, Alaska is the **LARGEST** U.S. capital by land area.



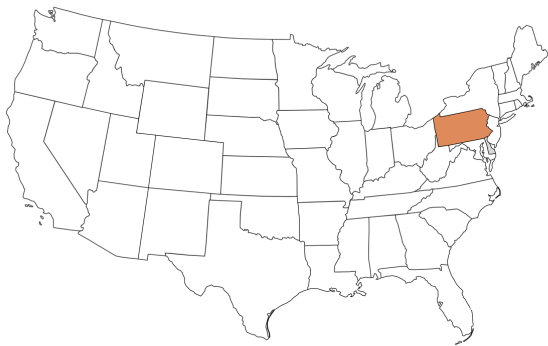
Honolulu, HI has the **highest average annual temperature** of all U.S. capital cities.

Phoenix, AZ is the **most populous** U.S. state capital with over **1.6 million people.**

Can you figure out the **ONLY letter** not used to spell any state name?



Pennsylvania



Fun Facts:

Pennsylvania is where the Declaration of Independence and the Constitution were debated and signed.

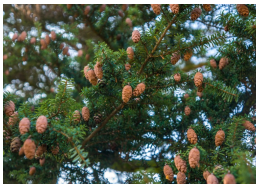
Pennsylvania is the only one of the original 13 colonies that does not border the Atlantic Ocean.

Harrisburg began as a trading post around 1718.

2nd State to join the Union
on December 12, 1787.

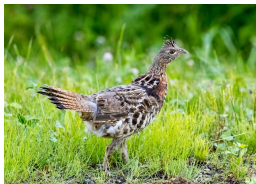
The Keystone State

State Tree



Eastern
Hemlock

State Bird



Ruffed Grouse

State Capital



Harrisburg

State Flower



Maintain-Laurel

State Mammal



White-Tailed
Deer

Harrisburg

Harrisburg



Harrisburg became the capital of PA in 1812.

Fun Facts:

Harrisburg began as a trading post around 1718.

Pennsylvania's capitol building is often referred to as a "palace of art."

The capitol building is 272 feet tall.

Harrisburg has a population of around 50,000.

Dauphin County

State Dog



Great Dane

State Colors

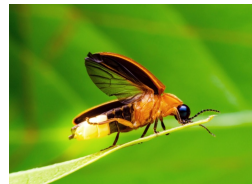


Blue & Gold

State Seal



State Insect



Firefly

State Fish



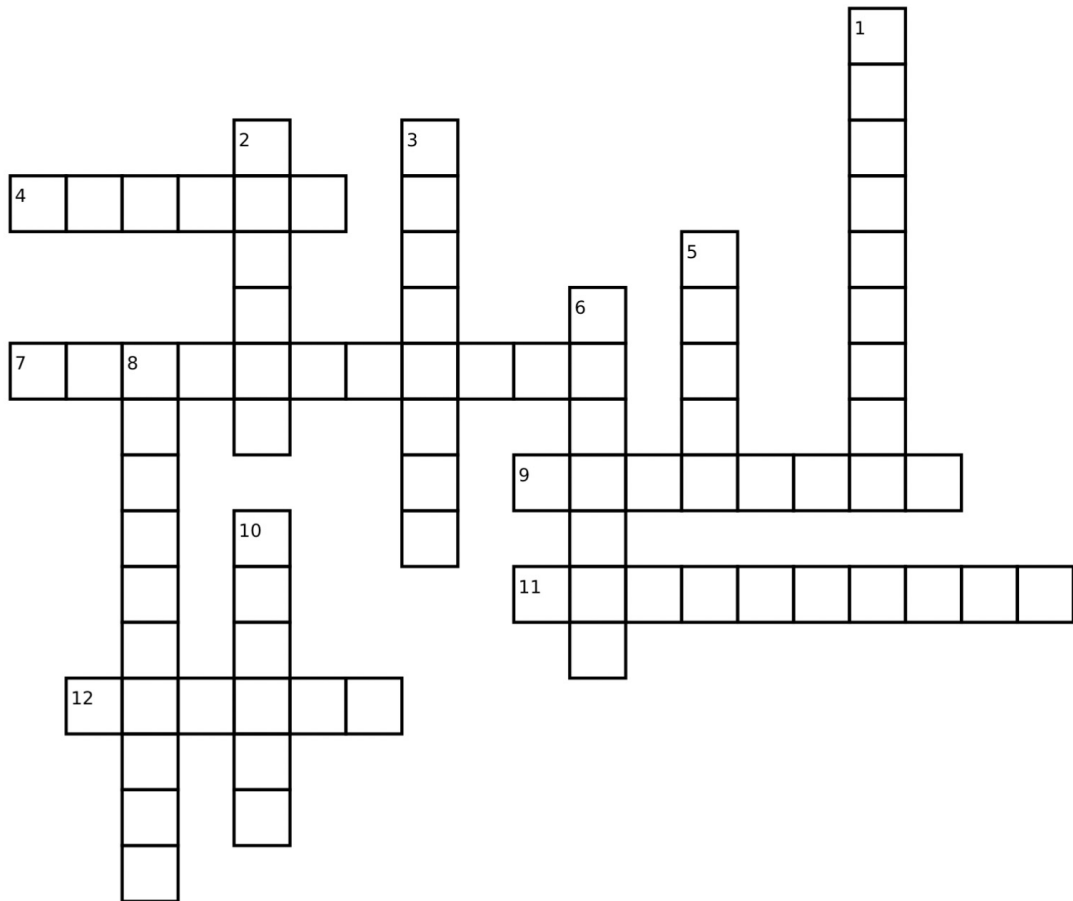
Brook Trout

Pennsylvania

★ Crossword Puzzle



Answers found in the States & Capitals Learn More magazine.



Down:

Across:

- | | |
|---|---|
| 1. The state flower of Kansas. | 4. The only U.S. capital inaccessible by car. |
| 2. The 50 th state the join the Union. | 7. The Magnolia State. |
| 3. The Great Lakes State. | 9. The 1 st state to join the Union. |
| 5. The state flower of New Mexico. | 11. The capital of Louisiana. |
| 6. The state tree of Georgia. | 12. The capital of Colorado. |
| 8. The capital of California. | |
| 10. The state mammal of Oregon. | |



Matching Game



Match each state with their capital city.

State

Arkansas

Delaware

Florida

Illinois

Kentucky

Massachusetts

Nebraska

Oklahoma

Rhode Island

Texas

Vermont

Washington

Capital

Tallahassee

Oklahoma City

Providence

Little Rock

Montpelier

Springfield

Austin

Frankfort

Olympia

Dover

Lincoln

Boston

ALL 50 STATES

LEARN⁺™
More

ENRICHMENT