

LEARN⁺™
more

Rhode Island Agriculture

Full of Food, Farmers & Fun!



3

Crops

Rhode Island Agriculture

LEARN ⁺ more



Apples



Milk



Sweet Corn

Rhode Island

Apples

The official state fruit of Rhode Island is a **Rhode Island Greening** apple.

Rhode Island Greening apples are commonly used to make **apple pie**.

3 of the Most Popular Varieties of Apples:

1. Gala
2. Red Delicious
3. Honeycrisp



36 apples make 1 gallon of cider.



2,500 varieties of apples are grown in the United States.

21% of apples are juiced.



An **apple blossom** is the flower that comes from an apple tree.

An apple tree takes at least **4 years** to start producing fruit.

Most apples are still all **HAND-PICKED**.



Rhode Island

Milk

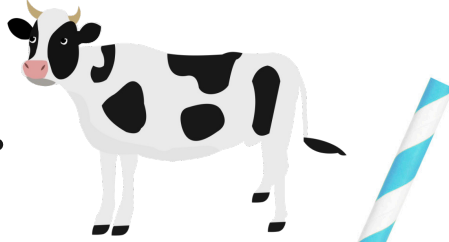
10 MILLION pounds of milk is produced in Rhode Island each year.

Rhode Island is home to **500** dairy cows.

Nearly **98%** of U.S. dairy farms are family owned & operated.

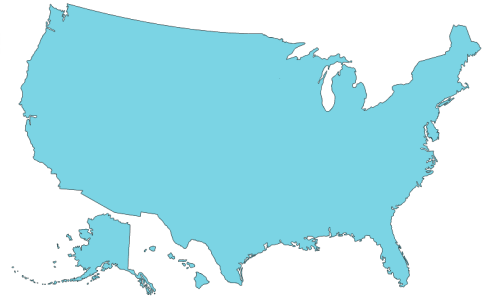
6

Breeds of Dairy Cows:



1. Ayrshire
2. Brown Swiss
3. Guernsey
4. Holstein
5. Jersey
6. Milking Shorthorn

ALL 50 states have dairy farms!



Holstein cows all have a **unique pattern of spots!**

1 cow produces around **6 gallons** of milk per day.

The reason milk is white is because it contains **“casein”** - a type of protein.

Farmers measure milk in **pounds**.

Milk is the source of **ALL** dairy products!

The U.S. produces **~21 BILLION** gallons of milk each year.



Rhode Island

Sweet Corn

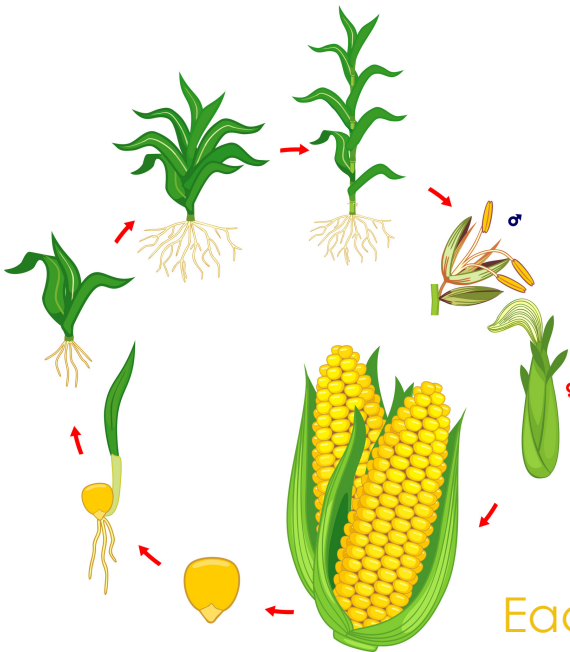
Sweet corn is one of Rhode Island's **top** commodities.

All 50 states grow sweet corn – find some at your local farmer's market!

In many other countries, corn is called "**maize.**"

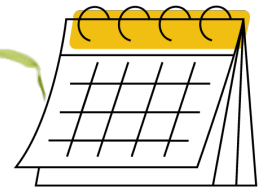
Only **1%** of the corn grown in the U.S. is sweet corn.

Corn is considered a **grain, fruit & vegetable.**



Sweet corn is grown on approximately **340,000 acres** across the U.S.

An ear of corn **ALWAYS** has an even number of rows.



Sweet corn is in *peak* season from **May - Sept.**



Around **800** kernels on each ear of corn.

Sweet corn is pollinated by the **wind.**

Sweet corn is the **ONLY** corn grown for **human** consumption.

Each stalk produces **1 - 3** ears of corn.

Learn More Library

