

LEARN⁺™
more

South Carolina Agriculture

Full of Food, Farmers & Fun!



8

Crops

South Carolina Agriculture

LEARN [#] More



Collard Greens



Corn



Eggplant



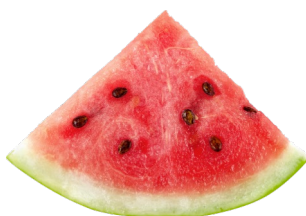
Peaches



Radishes



Soybeans



Watermelon



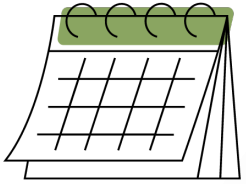
Wheat

South Carolina

Collard Greens

Collard greens are the official **state vegetable** of South Carolina.

Collard greens are **tastier** & more **nutritious** in the colder months of **January - April**.



Collard greens take **6 - 8 weeks** to go from seed to ready for harvest.

A **cool-season** vegetable.



The stem can be **24 - 48** inches long.

“The Wild Cabbage Plant”

Collard greens are a member of the **cabbage family**.

Popular Varieties of Collard Greens:

1. Blue Max
2. Georgia
3. Vates
4. Champion
5. Flash
6. Heavy

Collard greens are **biennials**, which means they have a **2-year** life cycle.



Collard greens produces small, yellow flowers.

These yellow flowers attract insects which is responsible for the **pollination**.



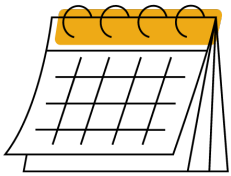
Collard greens are a type of **cruciferous vegetable**.



South Carolina

Corn

The U.S. is the **LARGEST** producer, consumer & exporter of corn in the world.



90 MILLION acres of corn is harvested each year in the U.S.

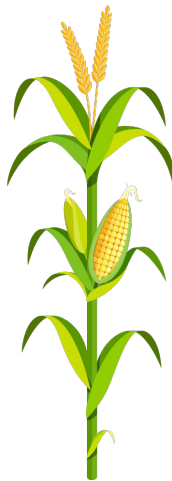
Corn is America's **number 1** field crop.

An ear of corn **ALWAYS** has an even number of rows.

Corn is considered a **vegetable, fruit** AND a **grain!**

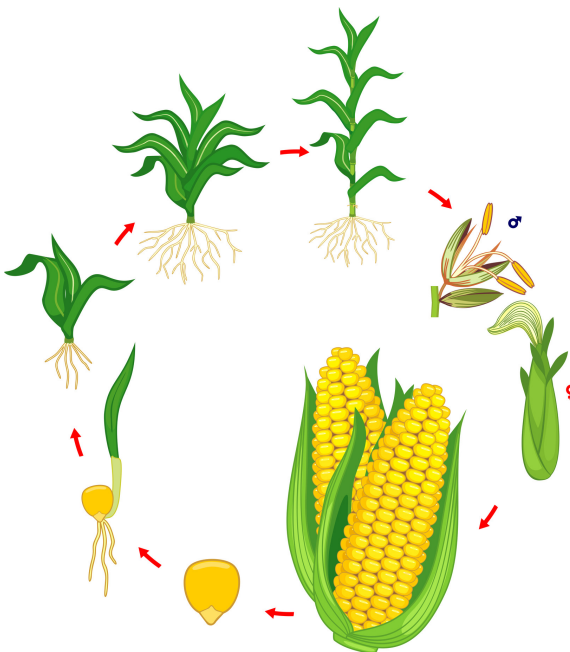


There are around **800** kernels on each ear of corn.



Most countries outside of the United States call corn "**maize**".

Most of the corn grown in the U.S. is grown in what is called the "**corn belt**" located in the Midwest.



South Carolina

Eggplant

Coming Soon!



South Carolina

Milk

South Carolina produces around **161 MILLION pounds** of milk per year.

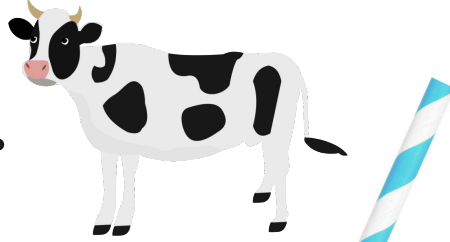
South Carolina is home to around **9,000** dairy cows.

Nearly **98%** of U.S. dairy farms are family owned & operated.

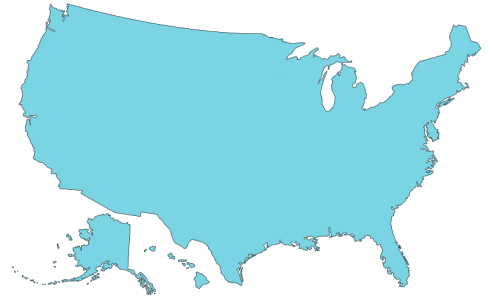
6

Breeds of Dairy Cows:

1. Ayrshire
2. Brown Swiss
3. Guernsey
4. Holstein
5. Jersey
6. Milking Shorthorn



ALL 50 states have dairy farms!



Holstein cows all have a **unique pattern of spots!**

1 cow produces around **6 gallons** of milk per day.

The reason milk is white is because it contains **“casein”** - a type of protein.



Farmers measure milk in **pounds**.

The U.S. produces **~21 BILLION** gallons of milk each year.



Milk is the source of **ALL** dairy products!

South Carolina

Peaches

The U.S. produces around **625,000 TONS** of peaches each year.

1 peach tree can produce up to **66 pounds** of fruit each year.

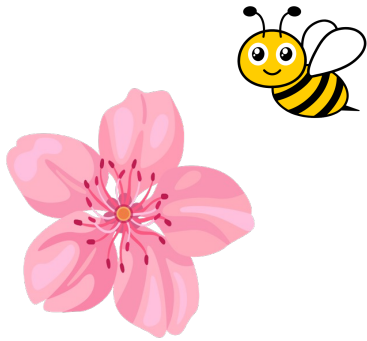
2 Main Varieties of Peaches:

1. Clingstone
2. Freestone

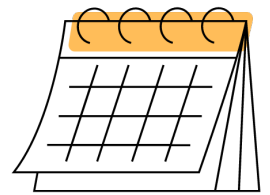
“**Persian plum**”

AUGUST

National Peach Month



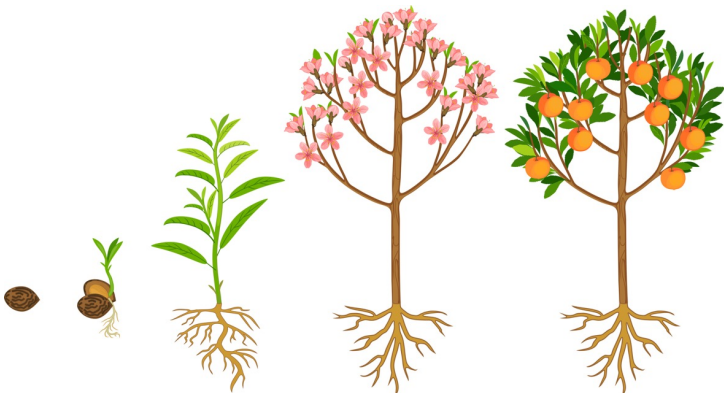
Once pollinated, peaches take **3-5 months** to reach harvesting point.



Peaches are in peak season from **June** - the end of **August**.



Peaches are harvested by **HAND**.



Peach trees can produce fruit for **12 years**.

Peach trees usually grow to be around **25 feet tall**.



South Carolina

Radishes

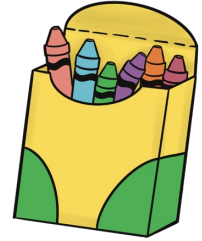
Coming Soon!



South Carolina

Soybeans

The U.S. produces around **4 BILLION bushels** of soybeans each year.

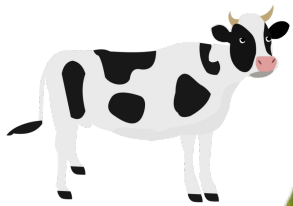


75 MILLION acres of farmland are used for growing soybeans in the U.S.

One acre of soybeans can produce **82,368** crayons!

Soybeans are a part of the **legume** family.

Soybeans were first grown in the U.S. for cattle feed.



The U.S. is the **leading** country in soybean production.



“Miracle Bean”

Soybean pods usually contains **3 seeds** each.

Each soybean plant produces around **100** pods.

Soybean plants average **3 - 5 feet** tall.



South Carolina

Watermelon

The U.S. is home to over **100,000 acres** of land that grows watermelon.

Watermelons are a part of the **gourd family**.

Around **38 MILLION pounds** of watermelon is harvested each year in the United States.

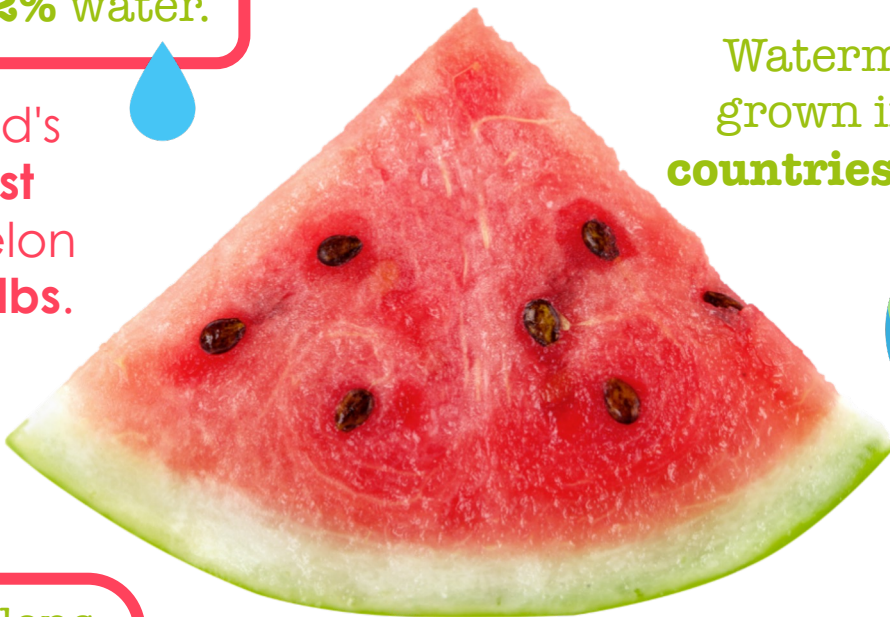


Watermelons are **92%** water.

There are over **1,200 different varieties** of watermelon.

The world's **heaviest** watermelon was **262 lbs.**

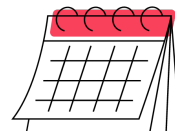
Watermelons are grown in over **96 countries** worldwide.



Harvested by hand.

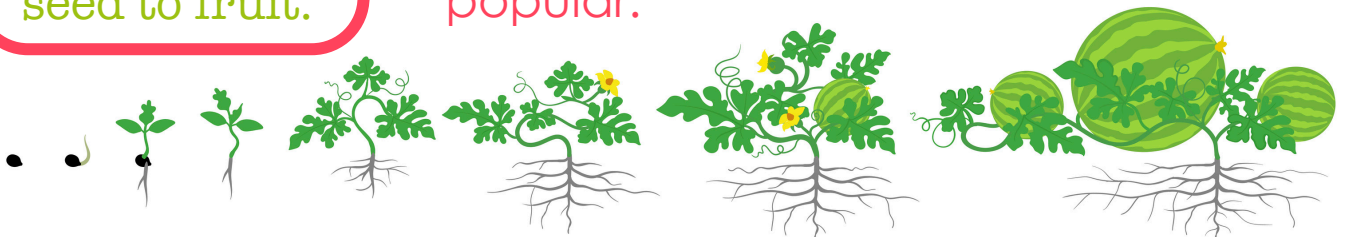
Watermelons take **90** days to grow from seed to fruit.

Seedless watermelon are most popular.



JULY

National Watermelon Month



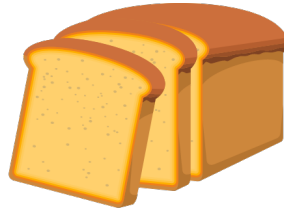
Wheat

The U.S. produces around **1.65 BILLION** bushels of wheat each year.

1 bushel of wheat contains around **100,000,000** individual kernels.

6 Classes of Wheat Grown in the U.S.

1. Hard Red Winter
2. Hard Red Spring
3. Soft Red Winter
4. Soft White
5. Durum



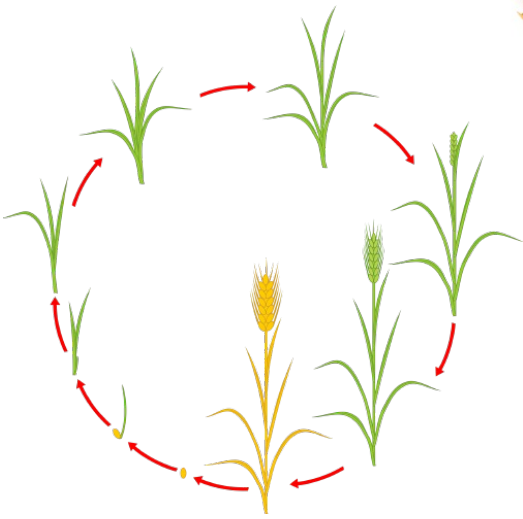
1 bushel of wheat can produce **90 loaves of bread.**

Hard Red Winter wheat is used mostly for making **breads.**

1 acre = **40** bushels of wheat.

The average wheat crop grows to be between **2 & 4** feet tall.

Wheat grows best in **warm** weather.



Wheat is the **MOST** harvested crop in the world.

Learn More Library

