

Fun Facts, Puzzles, Games & More!

CELRBRATION SERIES

LEARN<sup>TM</sup>  
more

# National States & Capitals Day

September 22<sup>nd</sup>



CHARLESTON

# NATIONAL DAY CALENDAR®

National States & Capitals Day focuses on raising awareness and sharing education about all 50 states and their capitals on National States & Capitals Day.



Dick & Jane are the proud founders of **National States & Capitals Day**.

The *National Day Calendar* gets over 30,000 applications every year for new, national holidays, but they only choose 10 per year. In 2022, National States & Capitals Day was chosen and became an official, national holiday!

Let's celebrate!

★ #NationalStatesandCapitalsDay ★



4 state capitals are named after U.S. Presidents –  
**Jackson, MS,**  
**Jefferson City, MO,**  
**Lincoln, NE &**  
**Madison, WI.**



Des Moines, IA  
was originally named  
**"Fort Racoon."**



**Montpelier, VT** is the smallest  
U.S. capital by population.

**17 state's capital**  
**city** is also the **largest**  
**city** in that state.



Juneau, Alaska is  
the **LARGEST** U.S.  
capital by land area.

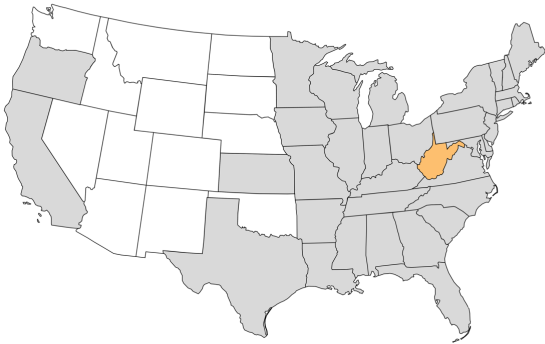


**Honolulu, HI** has  
the **highest average**  
**annual temperature** of  
all U.S. capital cities.

Phoenix, AZ  
is the **most**  
**populous** U.S.  
state capital  
with over  
**1.6 million**  
**people.**

Can you  
figure  
out the  
**ONLY**  
**letter**  
not used  
to spell  
any state  
name?

# West Virginia



35<sup>th</sup> State to join the Union  
on June 20, 1863.

## Fun Facts:

West Virginia is responsible for approximately 14% of America's coal production.

West Virginia is home to The Coal House – the only home in the world made entirely of coal.

Charleston has the largest population of all West Virginian cities.

## The Mountain State

State Tree



Sugar Maple

State Bird



Northern  
Cardinal

State Capital



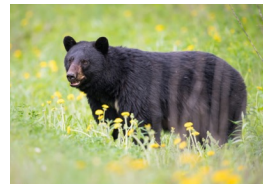
Charleston

State Flower



Rhododendron

State Mammal

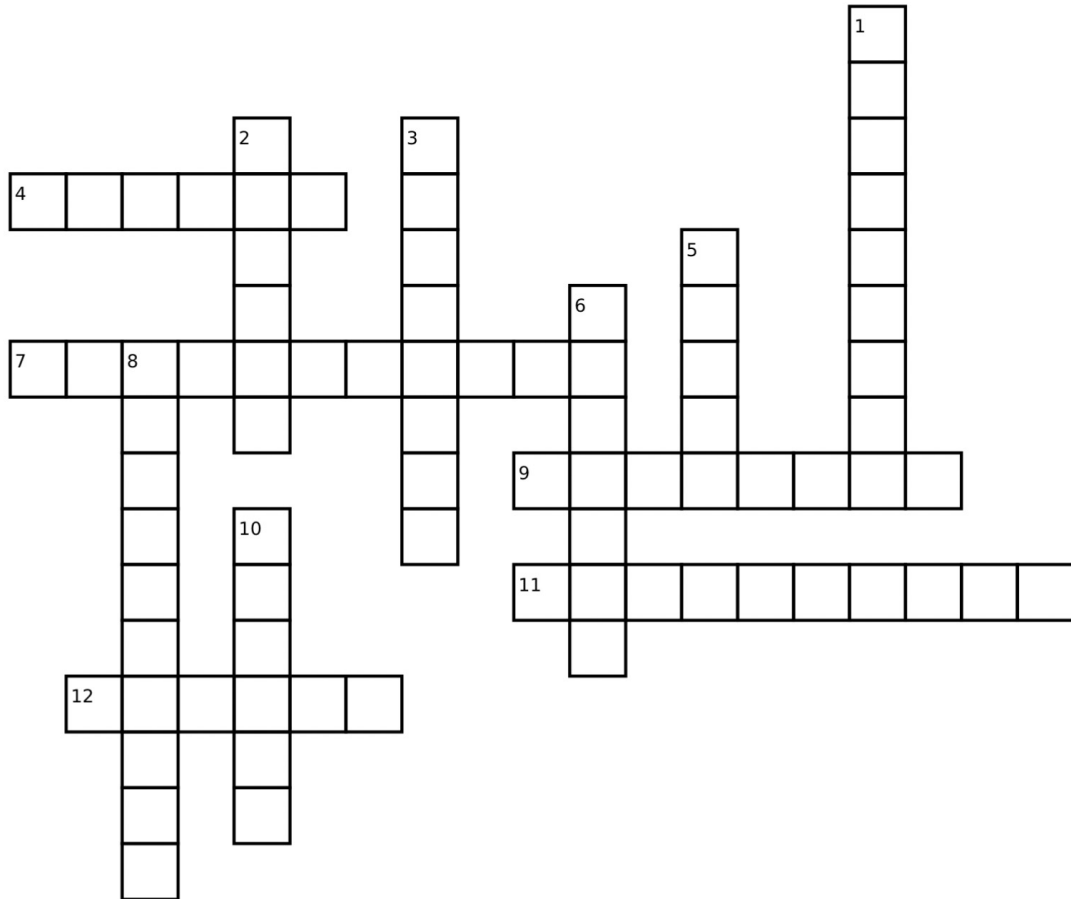


Black Bear

# Charleston

# ★ Crossword Puzzle

Answers found in the States & Capitals Learn More magazine.



Down:

Across:

- |   |   |
|---|---|
| 1. The state flower of Kansas.                    | 4. The only U.S. capital inaccessible by car.   |
| 2. The 50 <sup>th</sup> state the join the Union. | 7. The Magnolia State.                          |
| 3. The Great Lakes State.                         | 9. The 1 <sup>st</sup> state to join the Union. |
| 5. The state flower of New Mexico.                | 11. The capital of Louisiana.                   |
| 6. The state tree of Georgia.                     | 12. The capital of Colorado.                    |
| 8. The capital of California.                     |   |
| 10. The state mammal of Oregon.                   |   |



ALL 50 STATES

LEARN<sup>+</sup>™  
more

ENRICHMENT